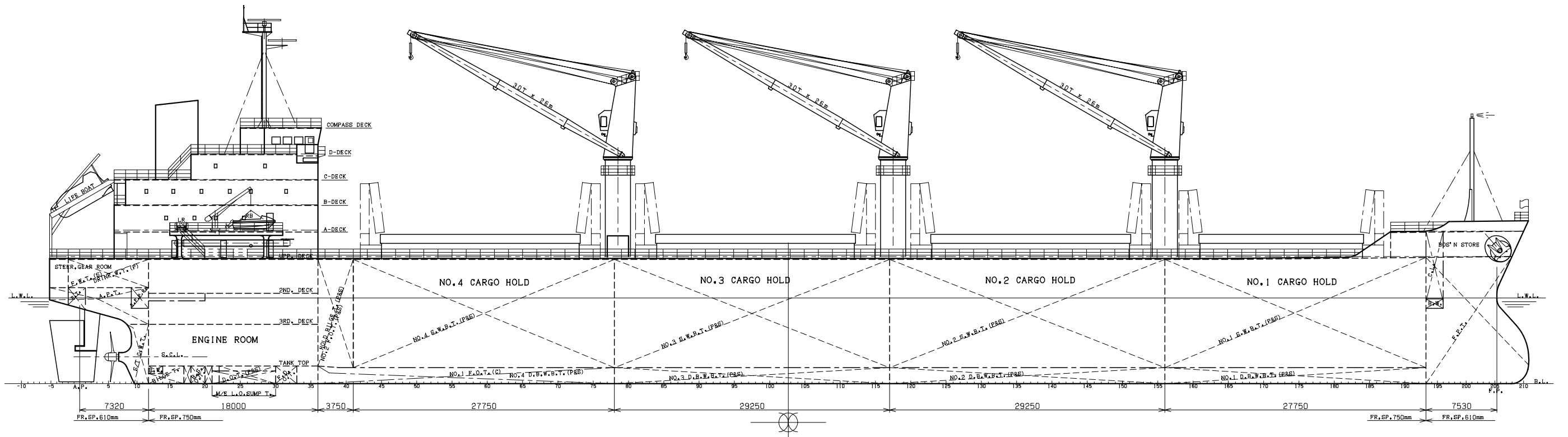
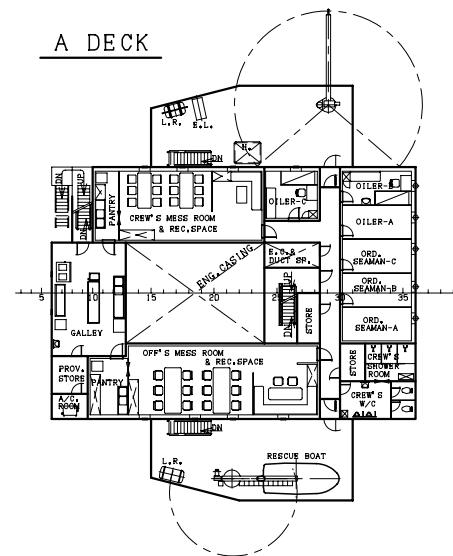


PRINCIPAL PARTICULARS

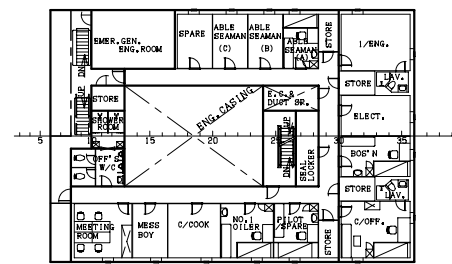
LENGTH O. A.	abt. 157.20 m
LENGTH B. P.	150.60 m
BREADTH (MLD)	26.80 m
DEPTH (MLD)	13.20 m
DESIGNED DRAFT (MLD)	9.10 m
GROSS TONNAGE	abt. 15,800 t
DEAD WEIGHT (SUMMER)	abt. 24,000 t
MAIN ENGINE	MAN-B&W 6S42MC (Mk6)
M.C.O.	5,850 kW X 129 min ⁻¹
C.S.O. (85% M.C.O.)	4,973 kW X 122 min ⁻¹
SERVICE SPEED (C.S.O. with 15% S.M. at DESIGNED DRAFT)	abt. 14.00 kts
COMPLEMENT	24 p



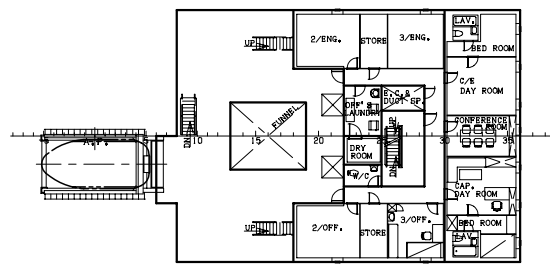
A DECK



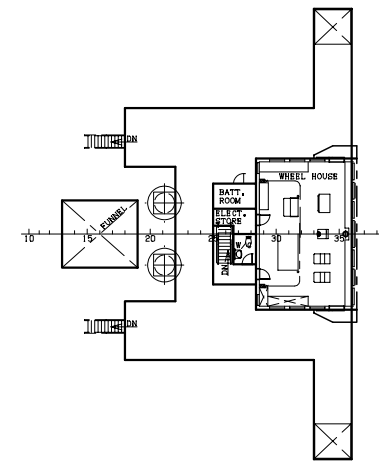
B DECK



C DECK



D DECK



F' CLE DECK

