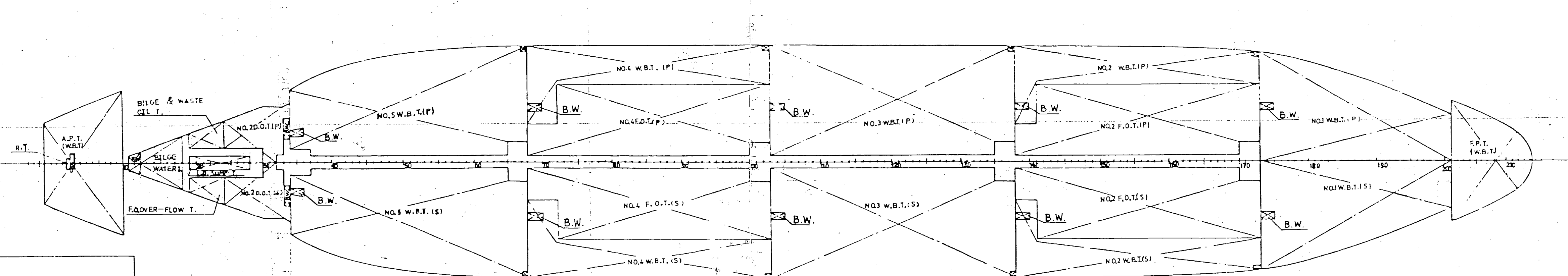
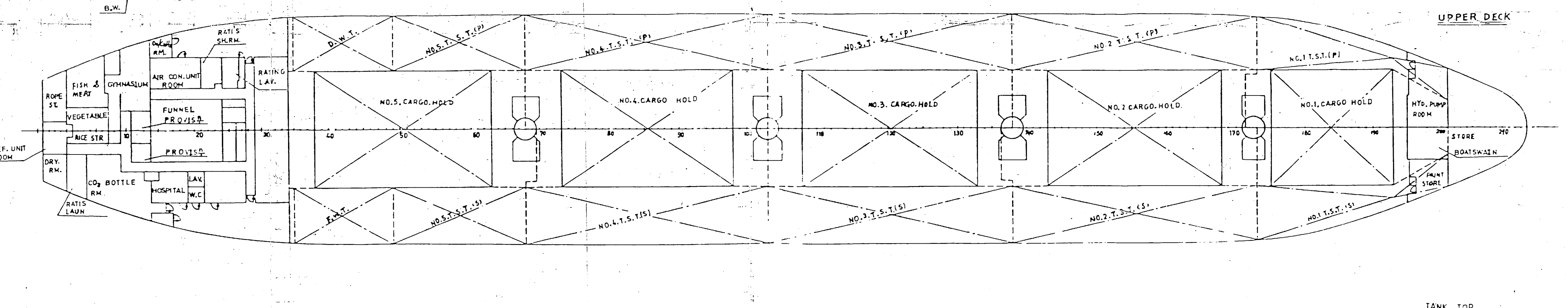
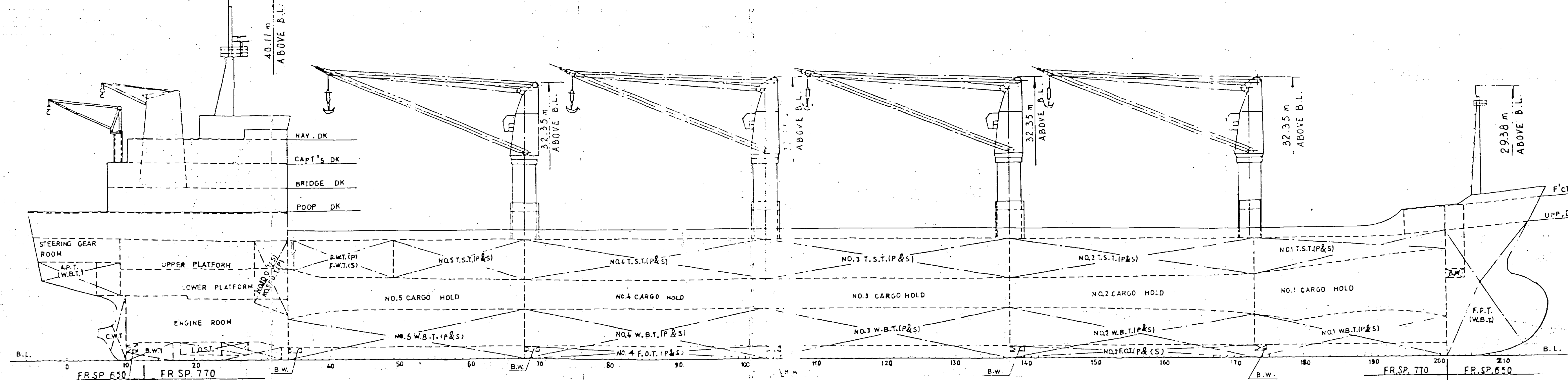
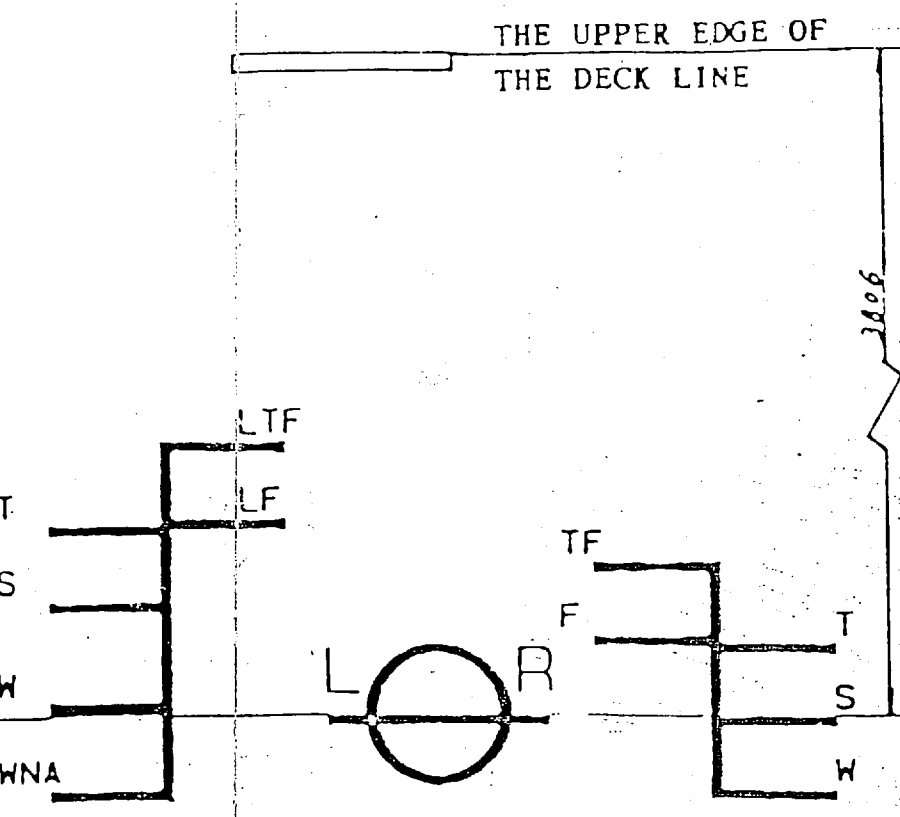
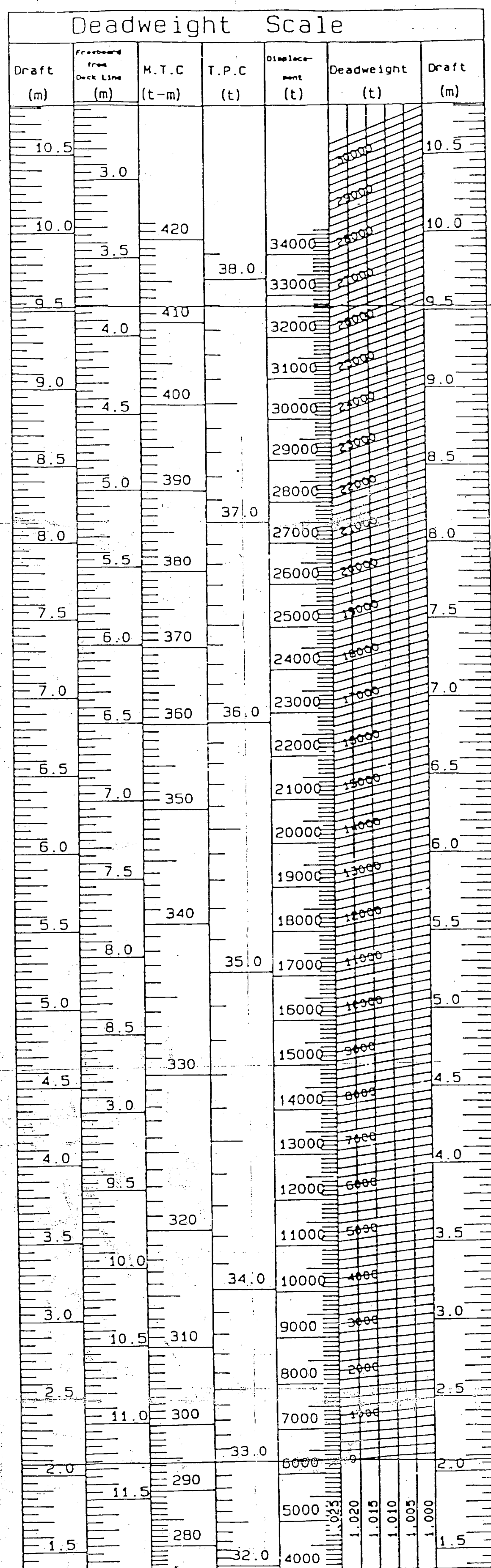


1/4 FREEBOARD MARK & DEADWEIGHT SCALE

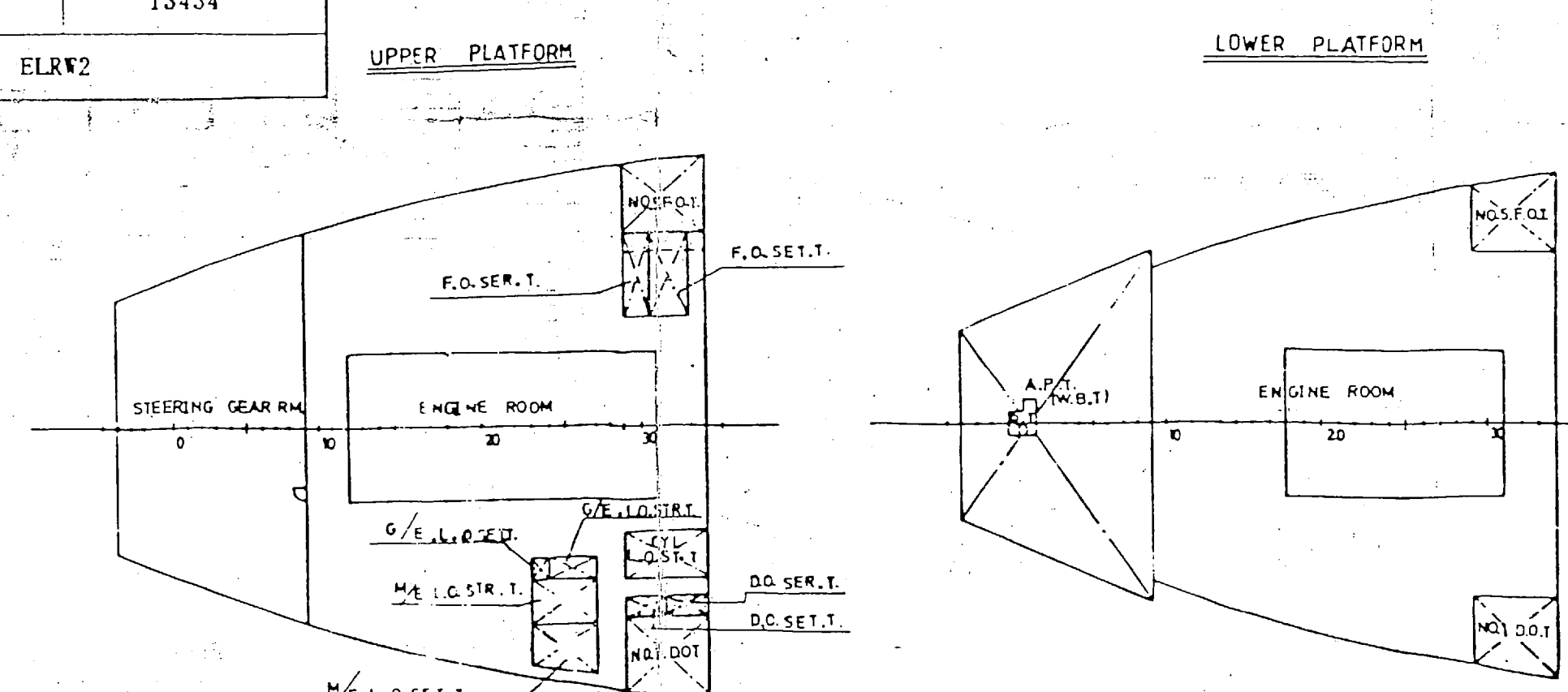


HOW TO USE "TRIM TABLE"
 TRIM TABLE SHOWS CORRECTION IN METER FOR FORE DRAFT & AFT DRAFT FOR EACH 100 METRIC TONS LOADED AT INTERVALS OF 10 FRAMES. IF DISCHARGING 100 METRIC TONS, THE PLUS & MINUS SIGNS ARE INTERCHANGED.

EXAMPLE
 FIND THE CHANGE OF FORE DRAFT & AFT DRAFT IN CASE OF LOADING FRAME NO. 40 WITH 30 METRIC TONS.
 ORIGINAL DRAFT FORE 8.00 m AFT 9.30 m MEAN 8.65 m
 CORRECTION FORE -0.057 x 30/100 = -0.171 m AFT 0.080 x 30/100 = 0.240 m
 NEW DRAFT FORE 8.00 - 0.171 = 7.829 m AFT 9.30 + 0.240 = 9.540 m

TONNAGE & ETC.			
	NATIONAL	SUEZ	PANAMA
GROSS	16041	17019.14	
NET	9266	14662.44	13434
Official number:	10250	Call sign:	ELR42

Light Ship 6280.000 t



NOTES ON STRENGTH

- Loading in any of an Empty Hold
 The maximum draft in any hold should not exceed 7.5m in any seagoing condition and 8.625m in sheltered water conditions.
- Allowable Lateral Loading
 Inner bottom 11.6t/m²
 Inner bottom (Plating and stiffening) 18t/m²
 Inner bottom 20' x 2' tier - length 1.5m hot coils, dunnage 4 rows
 15' x 2' tier - length 1.5m hot coils, dunnage 3 rows
 10' x 2' tier - length 1.5m hot coils, dunnage 2 rows
 Upper deck outside line of hatch 4t/m² uniform load.
 Upper deck maximum tieber height 8.0m above deck (Holds NO.2,3,4,5)
 Upper deck maximum tieber height 7.0m above deck (Hold NO.1)
 Hatch cover loading 3t/m² NO.1 hatch - uniform.
 3.0t/m² NO.2,3,4,5 hatches - uniform
- Minimum Draft Forward
 The draft at fore perpendicular is to be not less than 3.8m in heavy weather.
- Discharge of Cargo by Grabs
 The scantlings of the inner bottom structure of cargo holds are considered suitable for the discharge of cargo using grabs of unladen weight of 12t

LOG LOADING CAPACITY (In hold 210 cu.ft./1000 B.M./2.5t)					
APPLICATION	LOCATION	CAPACITY	WEIGHT	L.C.G.	V.C.G.
	Frame	(m ³)	(t)	(m)	(m)
NO.1 Cargo hold	173-201	4890.31	822271	2055.8	61.192
NO.2 Cargo hold	138-173	7431.78	1249601	3124.2	38.173
NO.3 Cargo hold	103-138	7431.78	1249601	3124.2	11.225
NO.4 Cargo hold	68-103	7431.78	1249601	3124.2	-15.725
NO.5 Cargo hold	34-68	6672.49	1121932	2805.0	-41.743
Total		33858.14	5693006	14733.4	

LOG LOADING CAPACITY (On upper deck 190 cu.ft./1000 B.M./2.5t)					
APPLICATION	LOCATION	CAPACITY	WEIGHT	L.C.G.	V.C.G.
	Frame	(m ³)	(t)	(m)	(m)
On NO.1 cargo hold deck	173-195	1990.2	369864	924.7	59.586
On NO.2 cargo hold deck	138-173	4276.1	794681	1996.7	38.138
On NO.3 cargo hold deck	103-138	4289.4	797153	1992.9	11.225
On NO.4 cargo hold deck	68-103	4244.2	788753	1971.9	-15.692
On NO.5 cargo hold deck	36-68	3954.8	734970	1837.4	-41.639
Total		18754.7	3485421	8713.6	

Freeboard Lines	Freeboard from deck line (m)	Draft (Extreme) (m)	Displacement (t)	Deadweight (t)
Tropical fresh TF	3.392	9.95	33324.6	27044.6
Fresh water F	3.59	9.752	32593.4	26313.4
Tropical T	3.608	9.734	33585.3	27255.3
Summer S	3.806	9.536	32783.3	26503.3
Winter W	4.004	9.338	32034.1	25754.1

Timber Freeboard Lines	Timber Freeboard from deck line (m)	Draft (Extreme) (m)	Displacement (t)	Deadweight (t)
Tropical fresh LTF	3.063	10.279	34539.4	28239.9
Fresh water LF	3.268	10.074	33782.6	27502.8
Tropical LT	3.286	10.056	34761.5	28481.5
Summer LS	3.491	9.851	33980.6	27730.6
Winter LW	3.764	9.578	32942.5	26662.6
Winter LNA	4.004	9.338	32034.1	25754.1

TRIM TABLE																											
DRAFT	POSITION	A.P.	FR.10	FR.20	FR.30	FR.40	FR.50	FR.60	FR.70	FR.80	FR.90	FR.100	FR.110	FR.120	FR.130	FR.140	FR.150	FR.160	FR.170	FR.180	FR.190	FR.200	FR.210	POSITION	DRAFT		
7.50	AFT	0.127	0.118	0.108	0.097	0.086	0.076	0.065	0.055	0.044	0.034	0.023	0.012	0.002	-0.010	-0.020	-0.031	-0.042	-0.052	-0.063	0.073	-0.084	-0.093	AFT	7.50		
	FDRE	-0.097	-0.089	-0.079	-0.069	-0.059	-0.049	-0.039	-0.029	-0.020	-0.010	0.001	0.011	0.021	0.031	0.041	0.051	0.061	0.071	0.081	0.091	0.101	0.110	FORE			
8.50	AFT	0.118	0.109	0.100	0.090	0.080	0.070	0.060	0.050	0.041	0.031	0.021	0.011	0.001	-0.010	-0.020	-0.030	-0.040	-0.050	-0.059	0.069	-0.079	-0.088	AFT	8.50		
	FDRE	-0.093	-0.085	-0.076	-0.066	-0.057	-0.047	-0.038	-0.028	-0.018	-0.009	0.002	0.012	0.021	0.031	0.041	0.050	0.060	0.070	0.079	0.089	0.099	0.107	FORE			
9.50	AFT	0.110	0.102	0.093	0.084	0.075	0.065	0.056	0.047	0.037	0.028	0.019	0.010	-0.001	-0.010	-0.019	-0.029	-0.038	-0.047	-0.057	-0.066	-0.075	-0.083	AFT	9.50		
	FDRE	-0.090	-0.082	-0.073	-0.064	-0.054	-0.045	-0.036	-0.026	-0.017	-0.008	0.003	0.012	0.022	0.031	0.040	0.050	0.059	0.067	0.078	0.087	0.097	0.105	FORE			

PARTICULARS	
L.O.A.	168.688 m
L.B.F.	160.000 m
BREADTH MOULDED	26.000 m
DEPTH MOULDED	13.300 m
SUMMER DRAFT (EXTREME)	9.536 m
SUMMER TIMBER DRAFT (EXTREME)	9.851 m

1. CARGO HOLDS						
NO.	COMPARTMENTS	POSITION FR. NO.	CAPACITY (m ³)	CAPACITY (m ³)	L.C.G. (m)	V.C.G. (m)
1	NO.1 CARGO HOLD	173-201	4890.31	4683.12	61.192	7.808
2	NO.2 CARGO HOLD	138-173	7431.78	7189.17	38.173	7.562
3	NO.3 CARGO HOLD	103-138	7431.78	7189.17	11.225	7.562
4	NO.4 CARGO HOLD	68-103	7431.78	7189.17	-15.725	7.562
5	NO.5 CARGO HOLD	34-68	6672.49	6449.18	-41.743	7.854
TOTAL			33858.14	32699.81		

2. WATER BALLAST TANKS, S.G. = 1.025t/m ³						
NO.	COMPARTMENTS	POSITION FR. NO.	CAPACITY 100% FULL (m ³)	WEIGHT 100% FULL (t)	L.C.G. (m)	V.C.G. (m)
1	NO.1 W.B.TX. (P&S)	173-201	491.67	503.96	60.505	1.199
2	NO.2 W.B.TX. (P&S)	138-173	703.83	721.43	36.402	2.016
3	NO.3 W.B.TX. (P&S)	103-138	1335.94	1369.34	11.141	1.484
4	NO.4 W.B.TX. (P&S)	68-103	767.02	786.19	-16.165	2.043
5	NO.5 W.B.TX. (P&S)	34-68	1208.52	1238.73	-42.336	1.889
6	NO.1 T.S.TX. (P&S)	173-201	436.67	447.59	60.486	12.355
7	NO.2 T.S.TX. (P&S)	138-173	862.45	890.16	38.117	11.952
8	NO.3 T.S.TX. (P&S)	103-138	880.70	902.72	11.225	11.929
9	NO.4 T.S.TX. (P&S)	68-103	880.70	902.72	-15.725	11.929
10	NO.5 T.S.TX. (P&S)	49-68	478.57	490.53	-36.516	11.928
11	F.P.T. (W.B.T.)	201-217	622.93	638.50	76.561	7.634
12	A.P.T. (W.B.T.)	4-9	142.35	145.91	-77.592	9.629
TOTAL			8817.35	9037.78		

3. FRESH WATER TANKS, S.G. = 1.00t/m ³						
NO.	COMPARTMENTS	POSITION FR. NO.	CAPACITY 100% FULL (m ³)	WEIGHT 100% FULL (t)	L.C.G. (m)	V.C.G. (m)
1	F.W.TX. (S)	35-49	158.26	158.26	-49.06	12.063
2	D.W.TX. (P)	35-49	158.26	158.26	-49.06	12.063
TOTAL			316.52	316.52		

4. L.O. TANKS, S.G. = 0.90t/m ³						
NO.	COMPARTMENTS	POSITION FR. NO.	CAPACITY 100% FULL (m ³)	WEIGHT 95% FULL (t)	L.C.G. (m)	V.C.G. (m)
1	L.O. STR. TX. (S)	23-27	12.14	10.38	-62.310	11.800
2	G/E L.O. STR. TX. (S)	24-27	4.10	3.51	-61.925	11.800
3	L.O. SET. TX. (S)	23-27	15.15	12.95	-62.256	11.856
4	L.O. SUMP T.	19-28	12.09	10.34	-63.465	11.087
5	CYL. L.O. STR. T.	29-34	16.69	14.27	-57.305	11.800
6	G/E L.O. SET. T.	23-24	1.37	1.17	-63.465	11.800
TOTAL			61.54	52.62		

5. D.O. TANKS, S.G. = 0.90t/m ³						
NO.	COMPARTMENTS	POSITION FR. NO.	CAPACITY 100% FULL (m ³)	WEIGHT 95% FULL (t)	L.C.G. (m)	V.C.G. (m)
1	NO.1 D.O. TX. (S)	29-34	78.47	67.09	-57.192	9.982
2	NO.2 D.O. TX. (P&S)	24-34	91.87	78.55	-58.936	1.137
3	D.O. SERV. T.	29-31.5	4.07	3.48	-58.268	11.500
4	D.O. SET. T.	31.5-34	2.70	2.30	-58.343	11.500
TOTAL			177.11	151.42		

6. F.O. TANKS, S.G. = 0.95t/m ³						
NO.	COMPARTMENTS	POSITION FR. NO.	CAPACITY 100% FULL (m ³)	WEIGHT 95% FULL (t)	L.C.G. (m)	V.C.G. (m)
1	NO.2 F.O. TX. (P&S)	138-173	536.22	483.94	38.773	0.659
2	NO.4 F.O. TX. (P&S)	68-103	541.94	489.10	-15.168	0.695
3	NO.5 F.O. TX. (P)	29-34	78.82	71.14	-57.192	9.997
4	F.O. SERV. T. (P)	29-30.5	10.01	9.03	-58.595	11.800
5	F.O. SET. T. (P)	30.5-33	13.50	12.18	-57.091	11.753
TOTAL			1180.49	1065.39		

7. COOLING WATER TANK, S.G. = 1.00 t/m ³						
NO.	COMPARTMENTS	POSITION FR. NO.	CAPACITY 100% FULL (m ³)	WEIGHT 100% FULL (t)	L.C.G. (m)	V.C.G. (m)
1	C.W. TX.	6-10	11.394	11.394	-74.213	5.024
TOTAL			11.394	11.394		

8. OTHER TANKS						
NO.	COMPARTMENTS	POSITION FR. NO.	CAPACITY 100% FULL (m ³)	WEIGHT 95% FULL (t)	L.C.G. (m)	V.C.G. (m)
1	BILGE TX.	10-18	29.66	28.18	-70.017	1.201
2	BILGE & WASTE OIL T. (P)	19-24	8.89	8.02	-64.693	1.336
3	F.O. OVERFLOW T.	19-24	8.89	8.02	-64.693	1.336
TOTAL			47.44	44.22		

OWNER: PACIFIC BASIN AGENCIES LTD. HULL NO. 313000K-313000

GUANGZHOU SHIPYARD INTERNATIONAL CO. LTD. -- CHINA

YARD REF. NO. K0000112 26300 DWT LOG / BULK CARRIER

DESIGNED: 李智强
 CHECKED: 张永华
 APP' VED: 张永华
 APP' VED: 张永华
 CERTIFIED:
 COPIED:
 SCALE: DWG. NO. G-18 OF REV.

CLIPPER LINE
 M/V PACROSE
 CAPACITY PLAN WITH DEADWEIGHT SCALE