

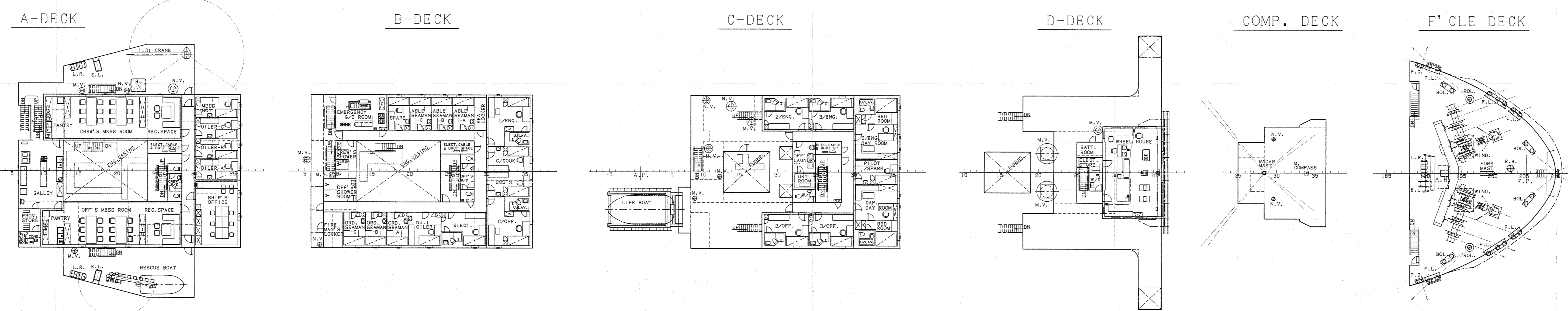
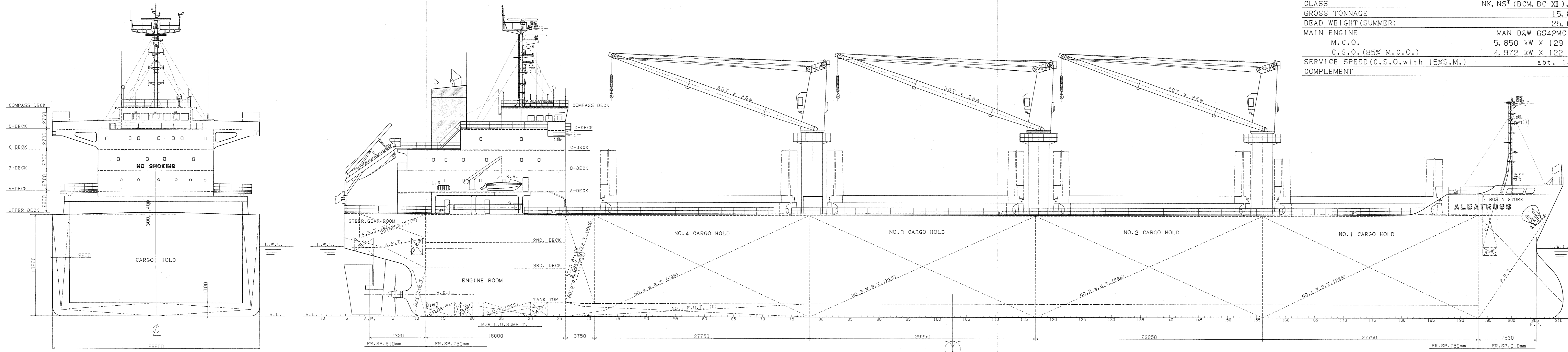
"M.V. ALBATROSS"

GENERAL ARRANGEMENT

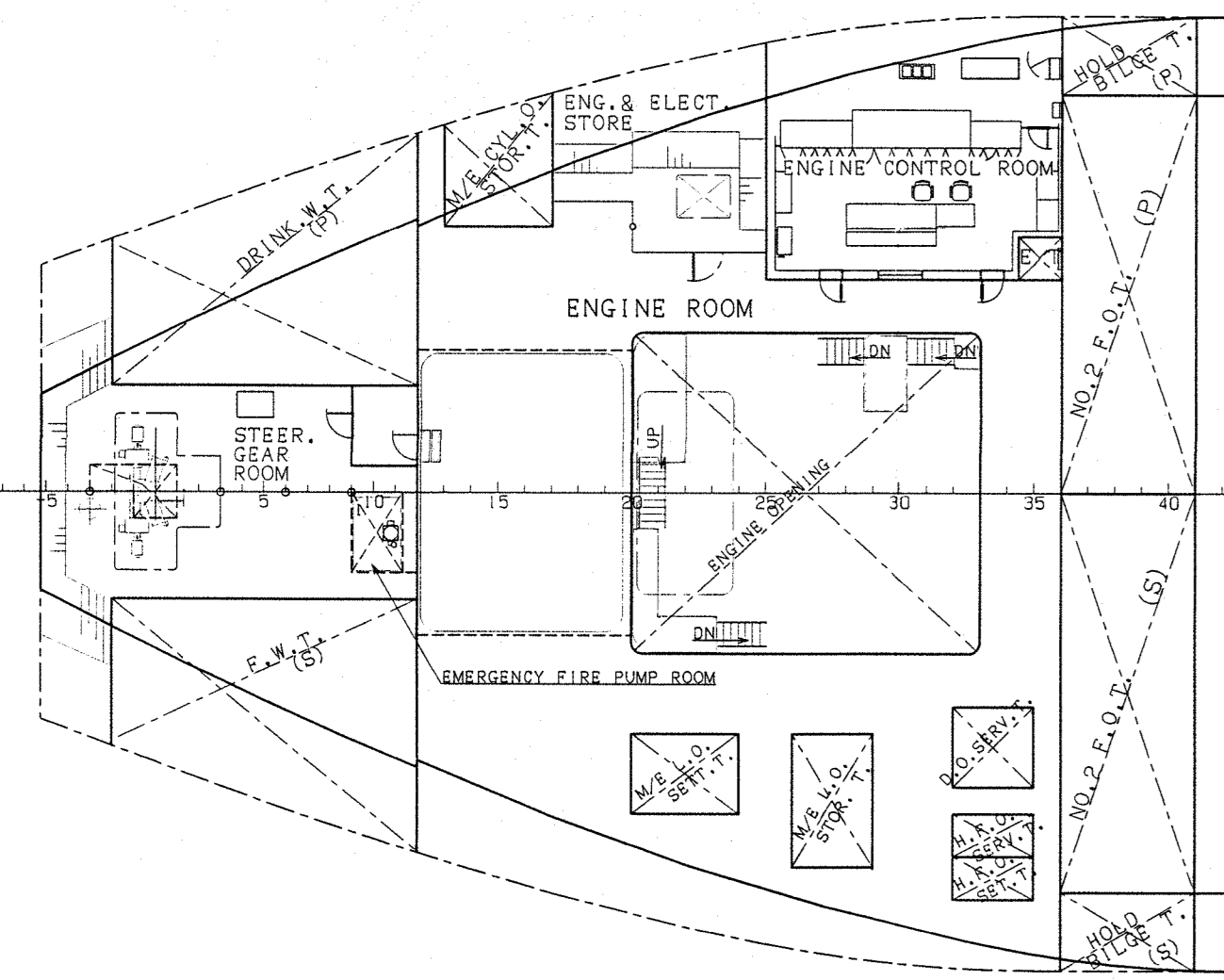
SCALE : 1/200

PRINCIPAL PARTICULARS

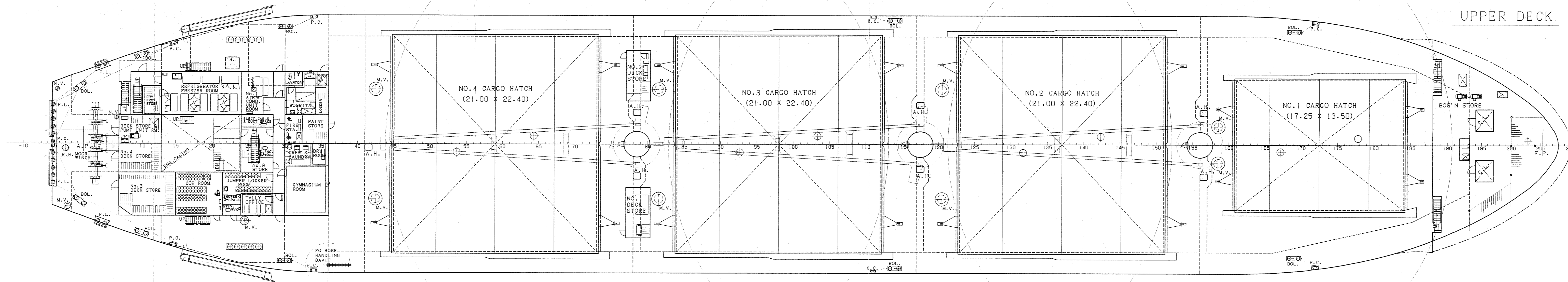
LENGTH O. A.	157.23 m
LENGTH B. P.	150.60 m
BREADTH (MLD)	25.80 m
DEPTH (MLD)	13.20 m
FULL LOAD DRAFT (SUMMER EXT.)	9.114 m
CLASS	NK, NS* (BCM, BC-M), MNS*
GROSS TONNAGE	15,851 T
DEAD WEIGHT (SUMMER)	25,028mt
MAIN ENGINE	MAN-B&W 6S42MC (MKG)
M.C.O.	5,850 kW X 129 min ⁻¹
C.S.O. (95% M.C.O.)	4,972 kW X 122 min ⁻¹
SERVICE SPEED (C.S.O. with 15XS.M.)	abt. 14.0kt
COMPLEMENT	24 p



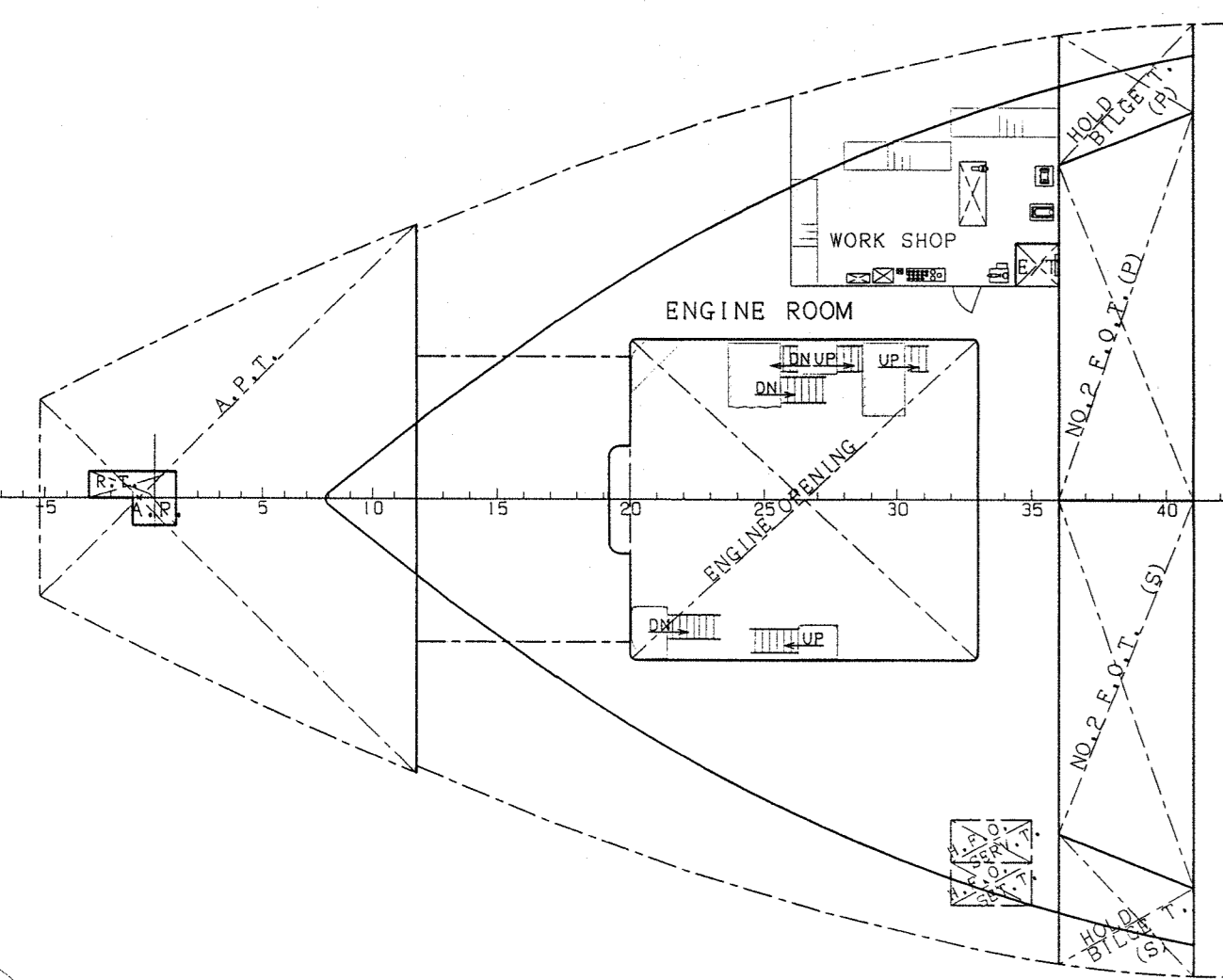
2ND DECK



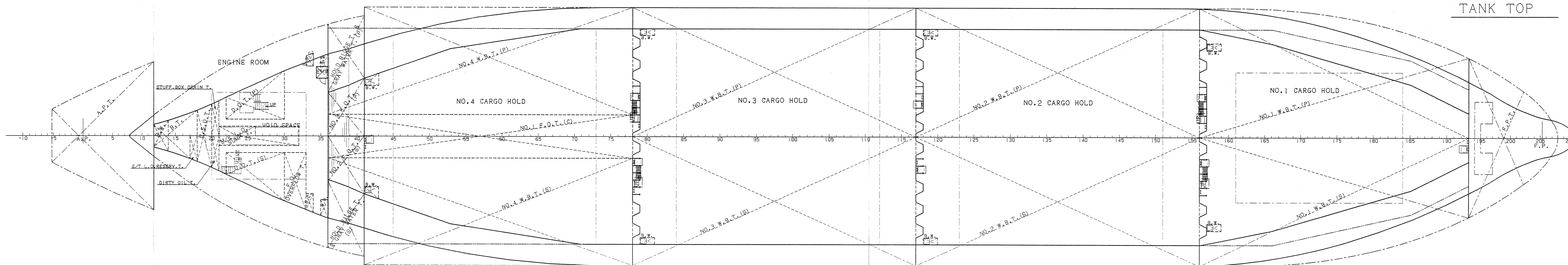
UPPER DECK



3RD DECK



TANK TOP



BIBLIOGRAPHY

16th December 2010
Prepared for finished plan

MANAGER	SHIP NO.	DRAWING NO.	CLASS
ASS. MANAGER	1063	B-110	N K
CHIEF	D.W. 24, 000M.T. TYPE BULK CARRIER		
ASS. CHIEF	GENERAL ARRANGEMENT		
CHECKED	FINISHED PLAN		
DRAWN	DATE		
16th December '10	SCALE 1: 200		