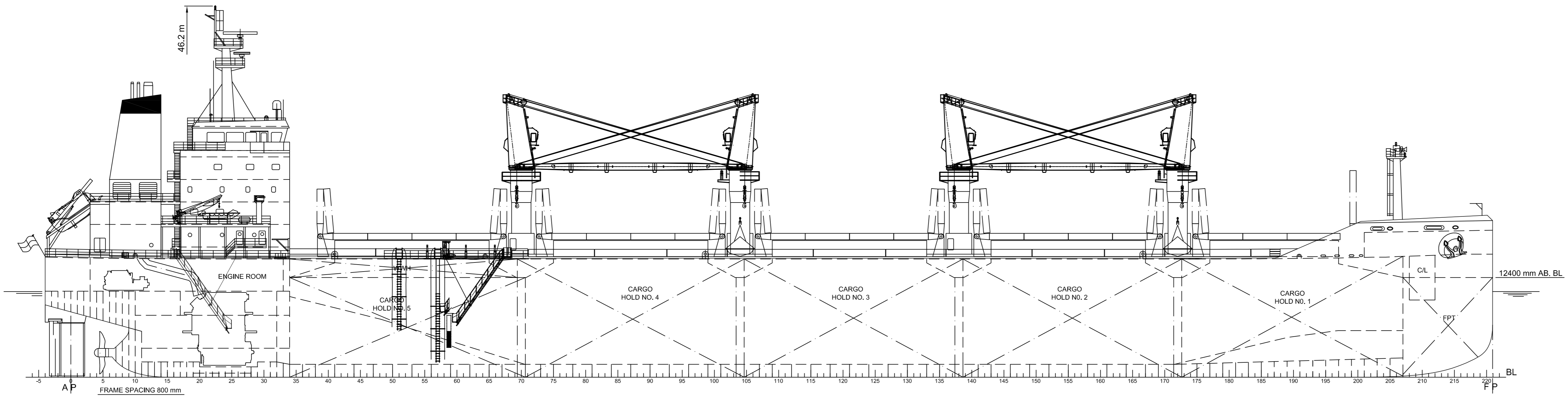
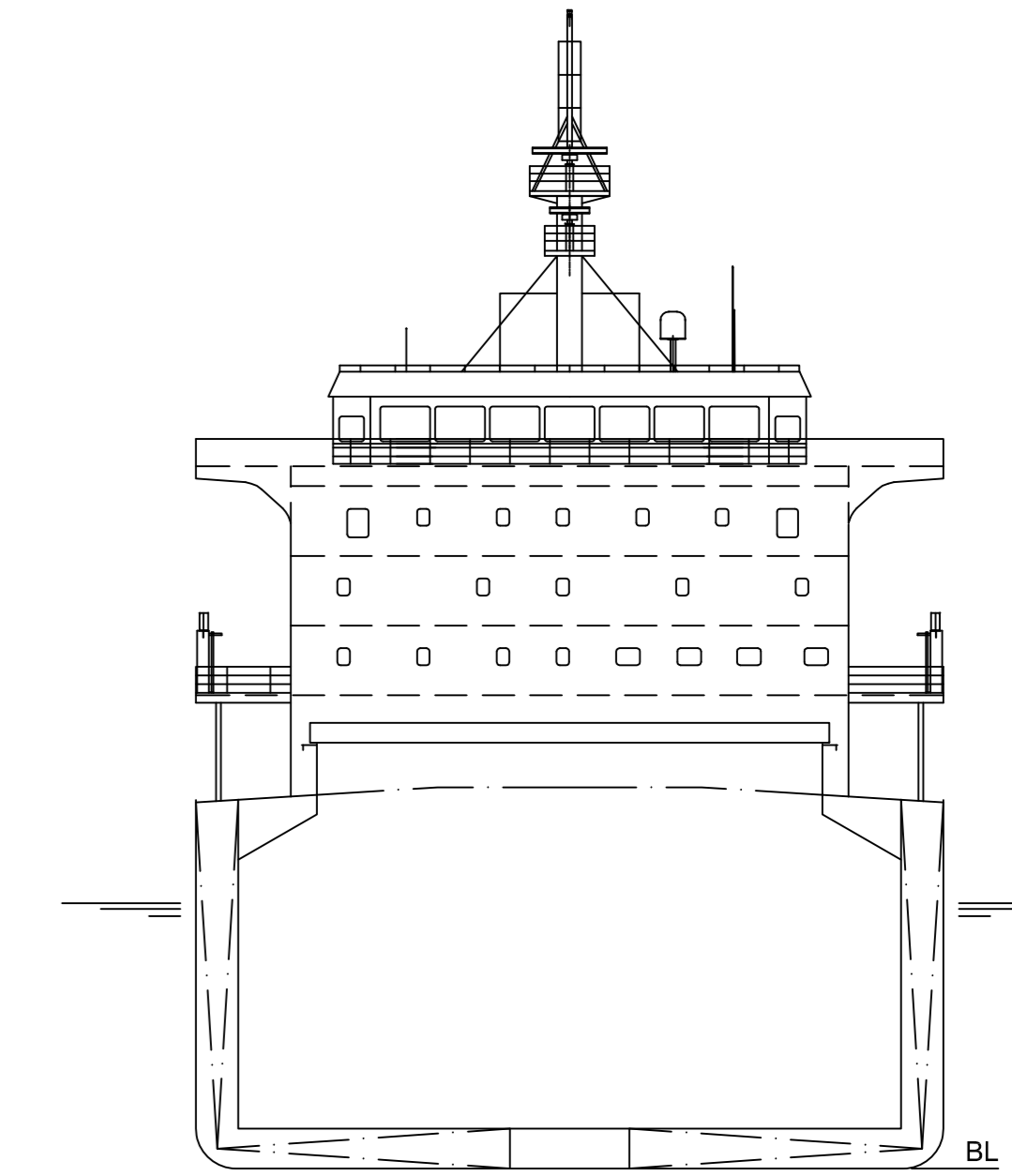


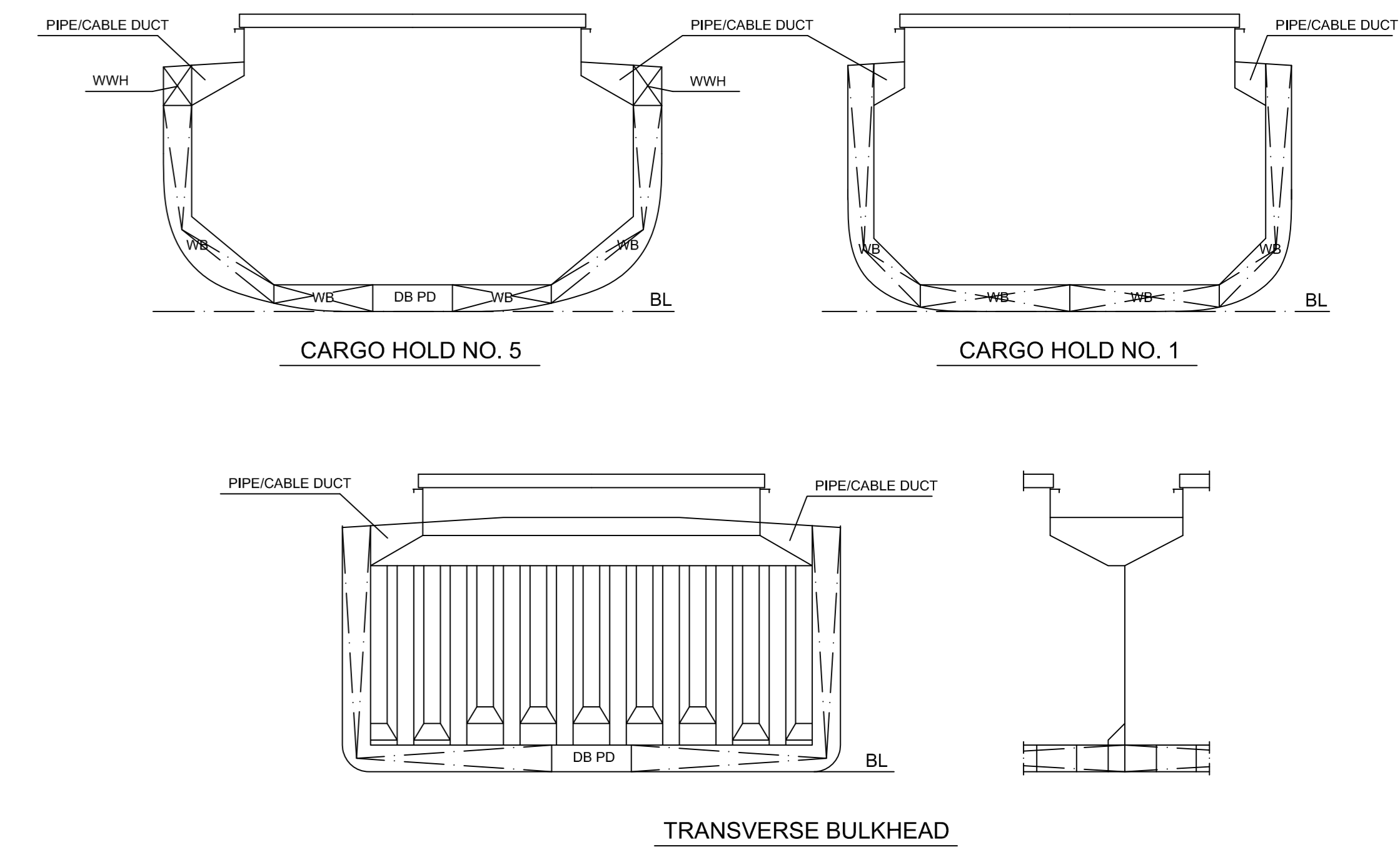
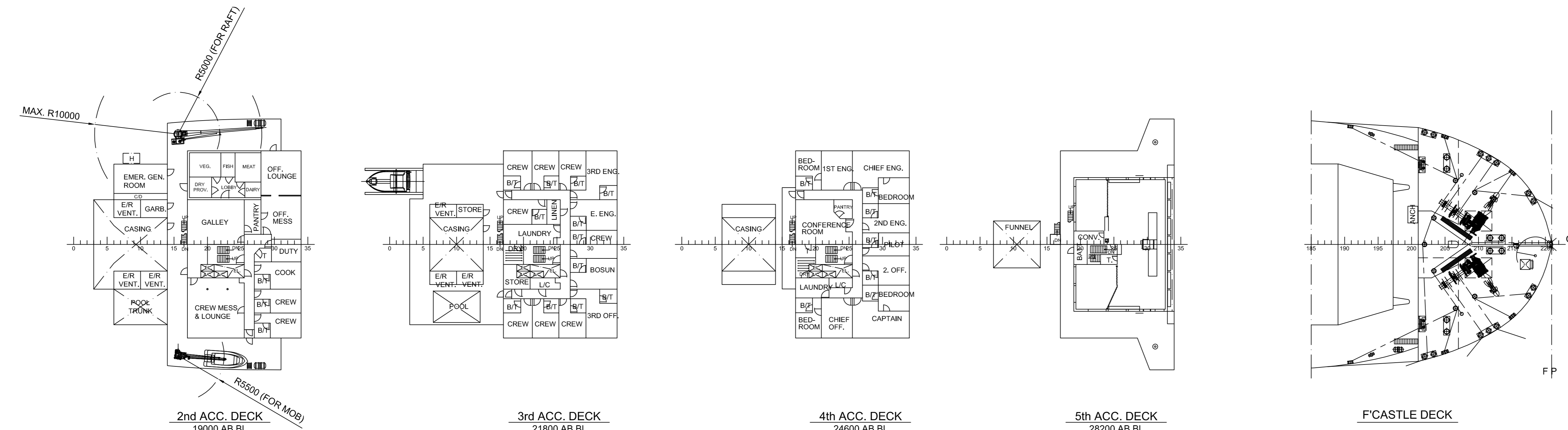
- WHEELHOUSE TOP  
31200 mm AB. BL
- 5th ACC. DECK  
26200 mm AB. BL
- 4th ACC. DECK  
24600 mm AB. BL
- 3rd ACC. DECK  
21800 mm AB. BL
- 2nd ACC. DECK  
19000 mm AB. BL
- 1st ACC. DECK 19200 mm AB. BL
- UPPER DECK (SIDE)  
14700 mm AB. BL
- A-DECK 10700 mm AB. BL
- B-DECK 7700 mm AB. BL
- E/R FLOOR 3750 mm AB. BL
- TANK TOP  
1600/1905 mm AB. BL



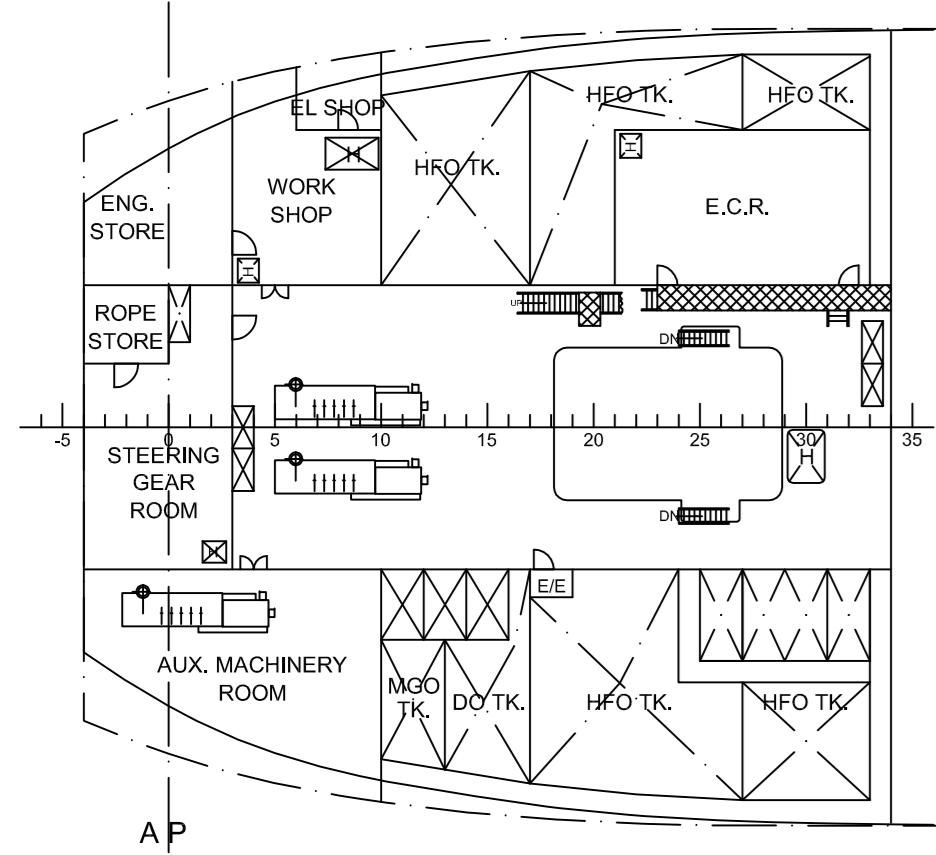
PROFILE



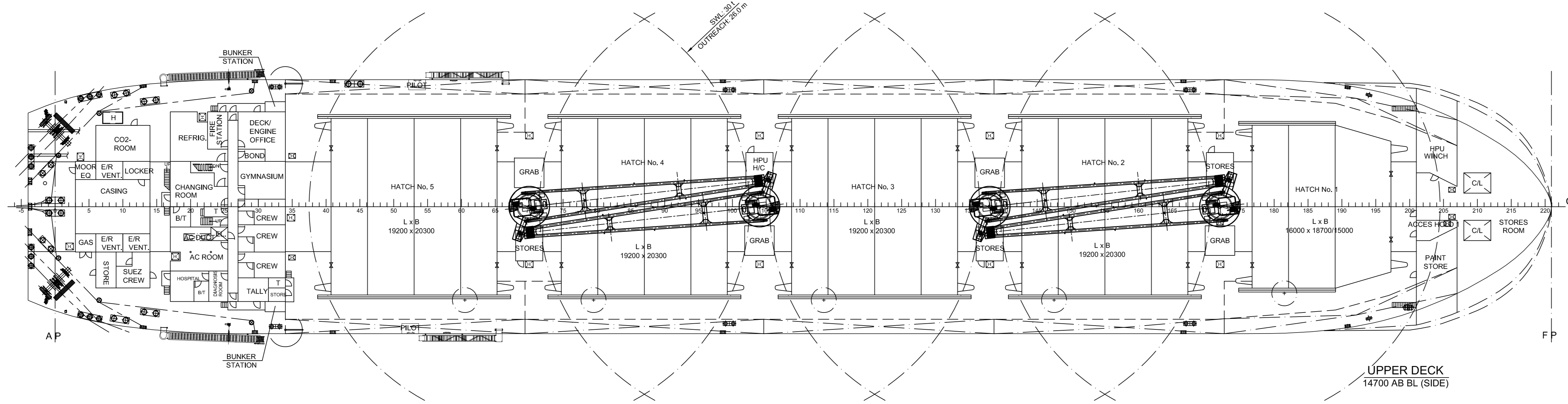
MIDSHIP SECTION



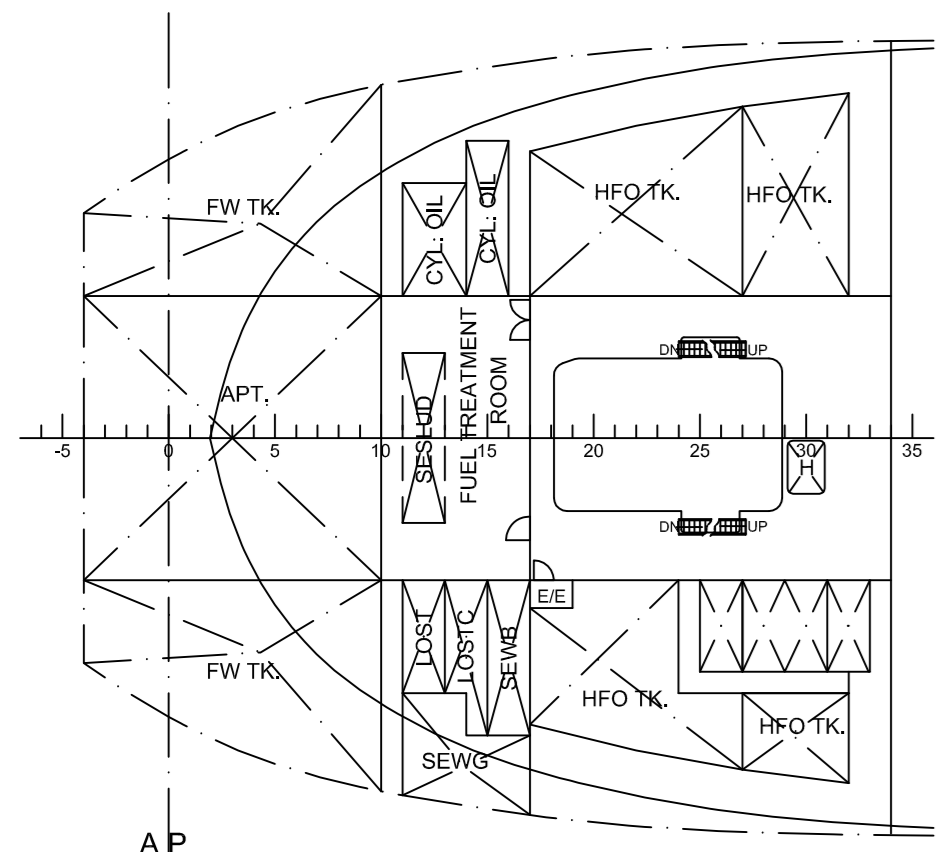
TRANSVERSE BULKHEAD



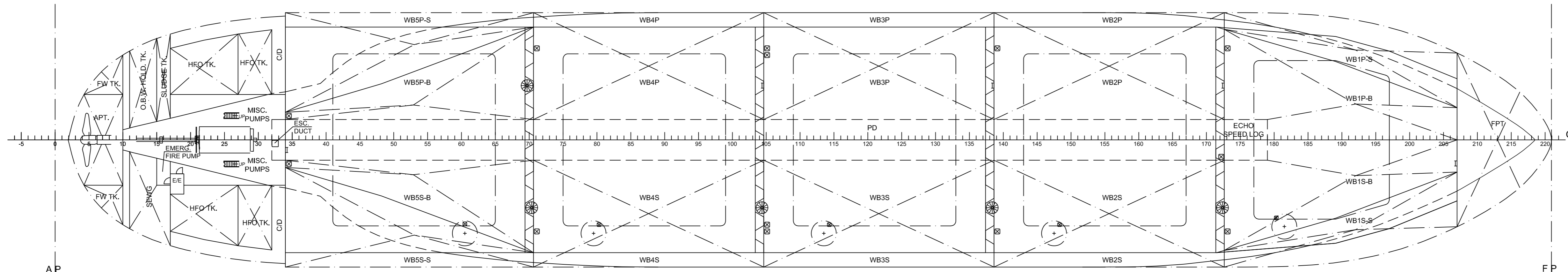
A-DECK  
10700 AB BL



UPPER DECK  
14700 AB BL (SIDE)



B-DECK  
7700 AB BL



TANK TOP  
1600/1905 AB BL

A1 009-01

## SEAHORSE 375 - 37,300 DWT BULK CARRIER

### MAIN DIMENSIONS (ALL APPROX):

LENGTH OA MAX.	: 180.00 m
LENGTH PP APPROX.	: 176.75 m
RULE LENGTH	: 174.55 m
BREADTH (MLD)	: 30.00 m
DEPTH TO UPPER DECK (MLD)	: 14.70 m
CARGO CAPACITY (100%)	: 46,700 m³
DWT (SCANTLING DRAUGHT)	: 37,300 t
DESIGN DRAUGHT	: 10.10 m
SCANTLING DRAUGHT	: 10.65 m
CB (SCANTLING DRAUGHT)	: 0.84
SERVICE SPEED (DESIGN DRAUGHT)	: 14.00 kn
CORRESPONDING OUTPUT (15% SEA MARGIN)	: 5,675 kW

### CLASS NOTATION:

BV I, +HULL, +MACH, Bulk Carrier CSR, BC-A (holds 2.4 may be empty),  
ESP, unrestricted navigation, GRAB(20), AUT-UMS, MON-SHAFT,  
INWATERSURVEY, CPS(WBT), heavycargo, BWT

### NOTE:

VESSEL IS PREPARED FOR LATER INSTALLATION OF LOG STANCHIONS.  
THUS, DWT IS REDUCED TO 37,100 t.

B	UPDATED FULL SPADE RUDDER	SXF	LTA	TAW	2014-01-27
A	UPDATED WITH YARD COMMENTS ABOUT HO1S/HOSER/HOET	SXF	RUJ	TAW	2014-01-09
Revision/Description	Dgn./Eng.	Control	Approval	Date	

**Grontmij**  
Marine

Naval Architects - Marine Engineers - Surveyors

Scale	Size	Dgn./Eng.	Control	Approval	Date
1:400	841x594	LTA/SXF	BSN	KHU	2014-01-08
Job					Job No.

SEAHORSE 375 - GYSB  
GUOYU SHIPBUILDING NOS.GY207,GY208

Subject

Drawing No.

GENERAL ARRANGEMENT

009-01 A