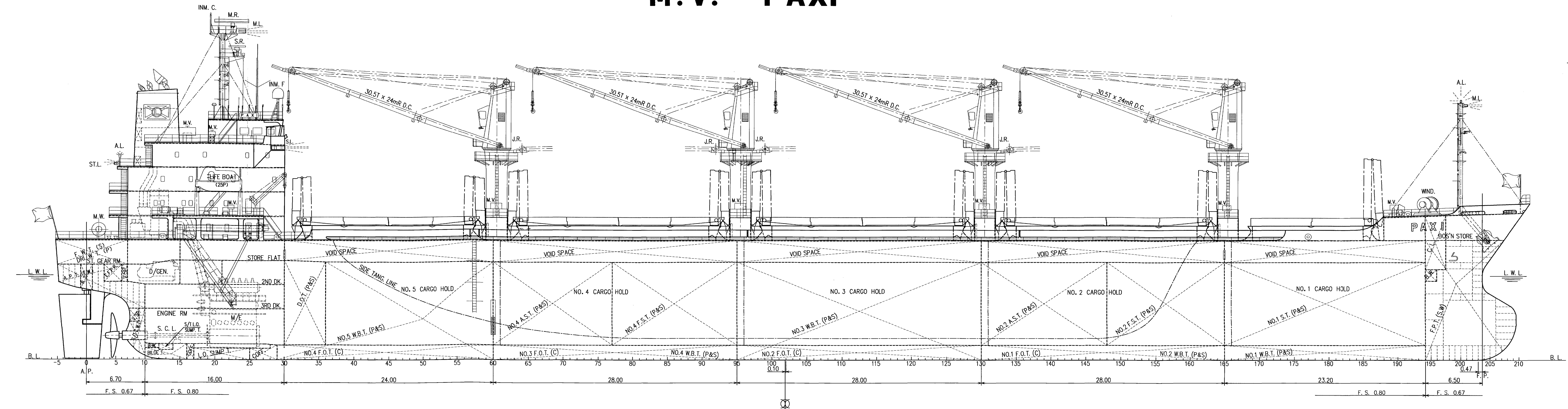
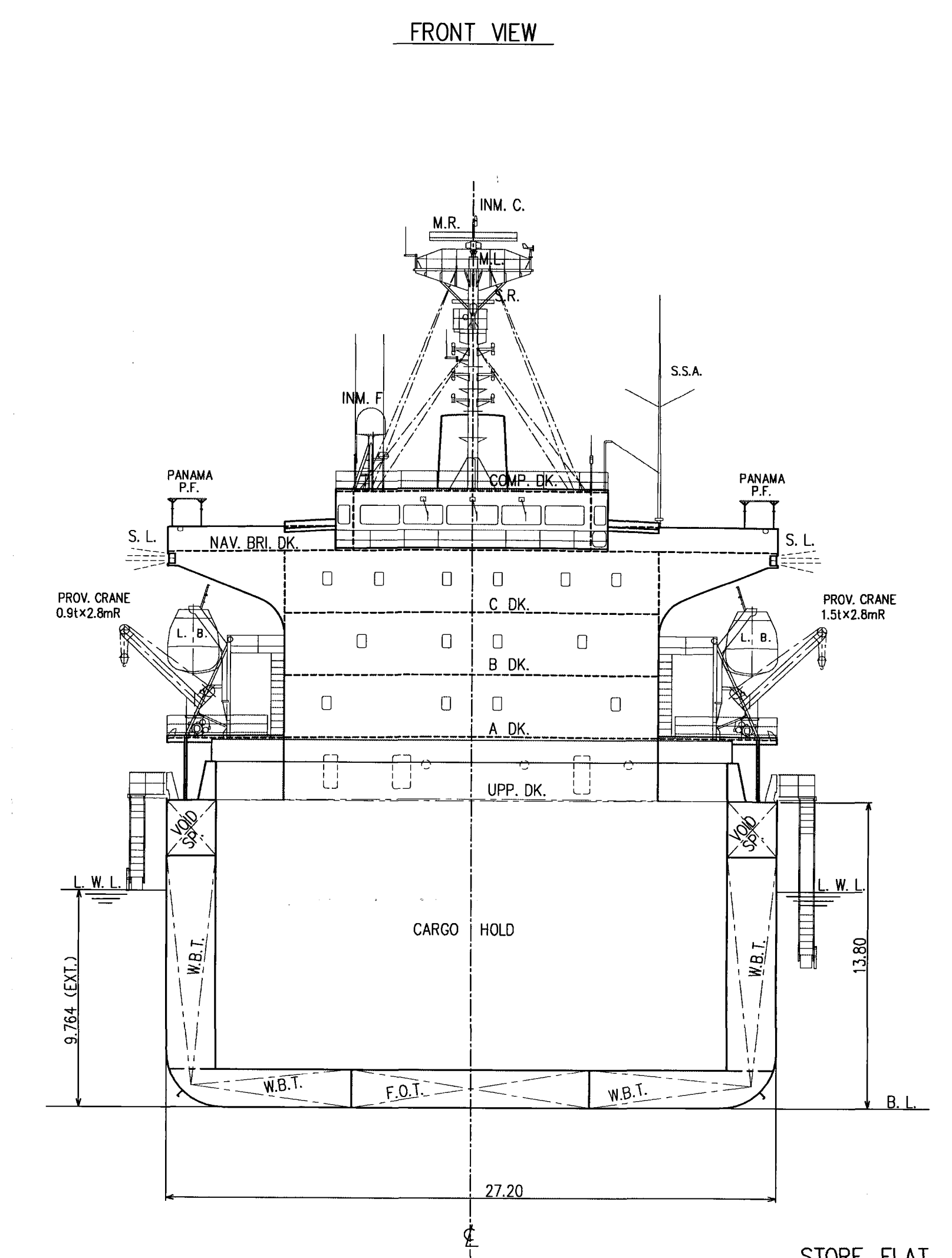
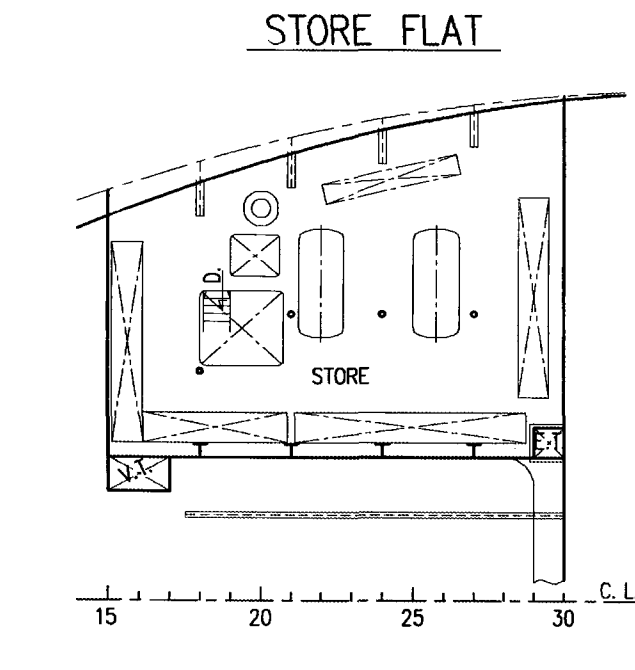


GENERAL ARRANGEMENT SCALE 1:200

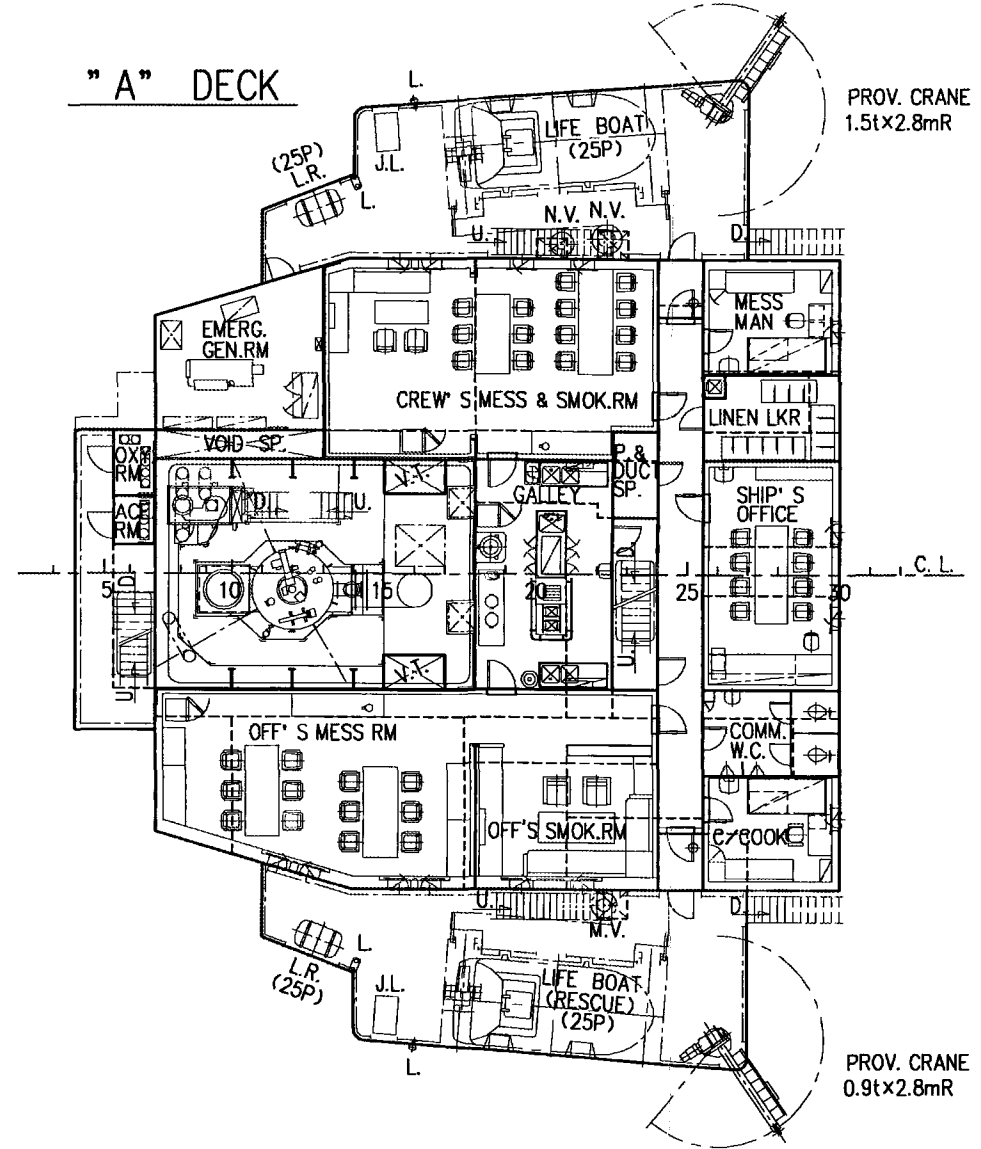
M.V. PAXI



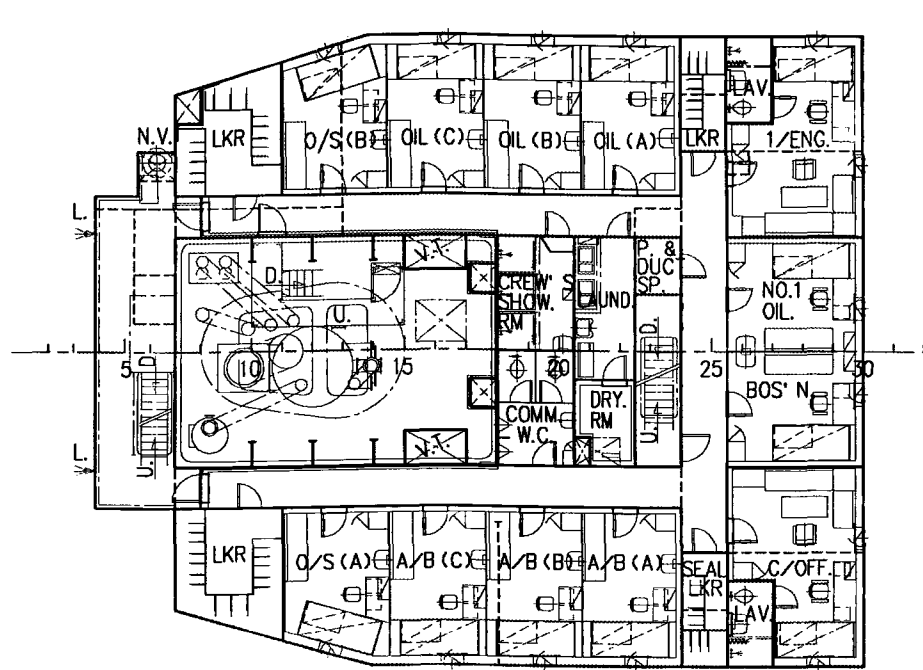
PROFILE



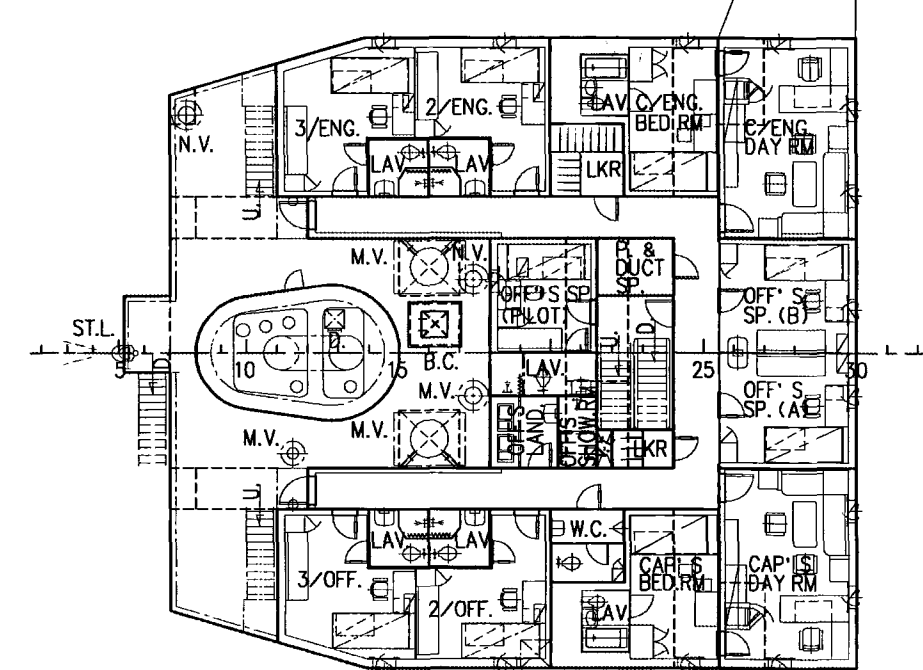
STORE FLAT



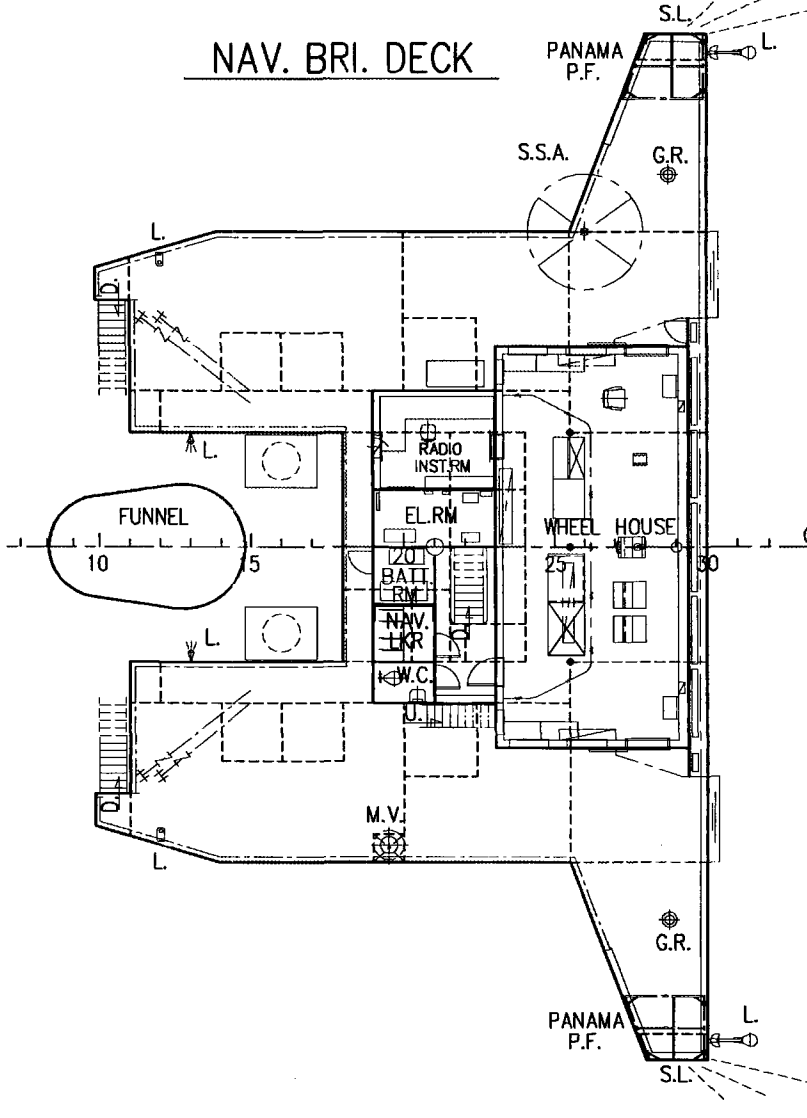
A DECK



B DECK

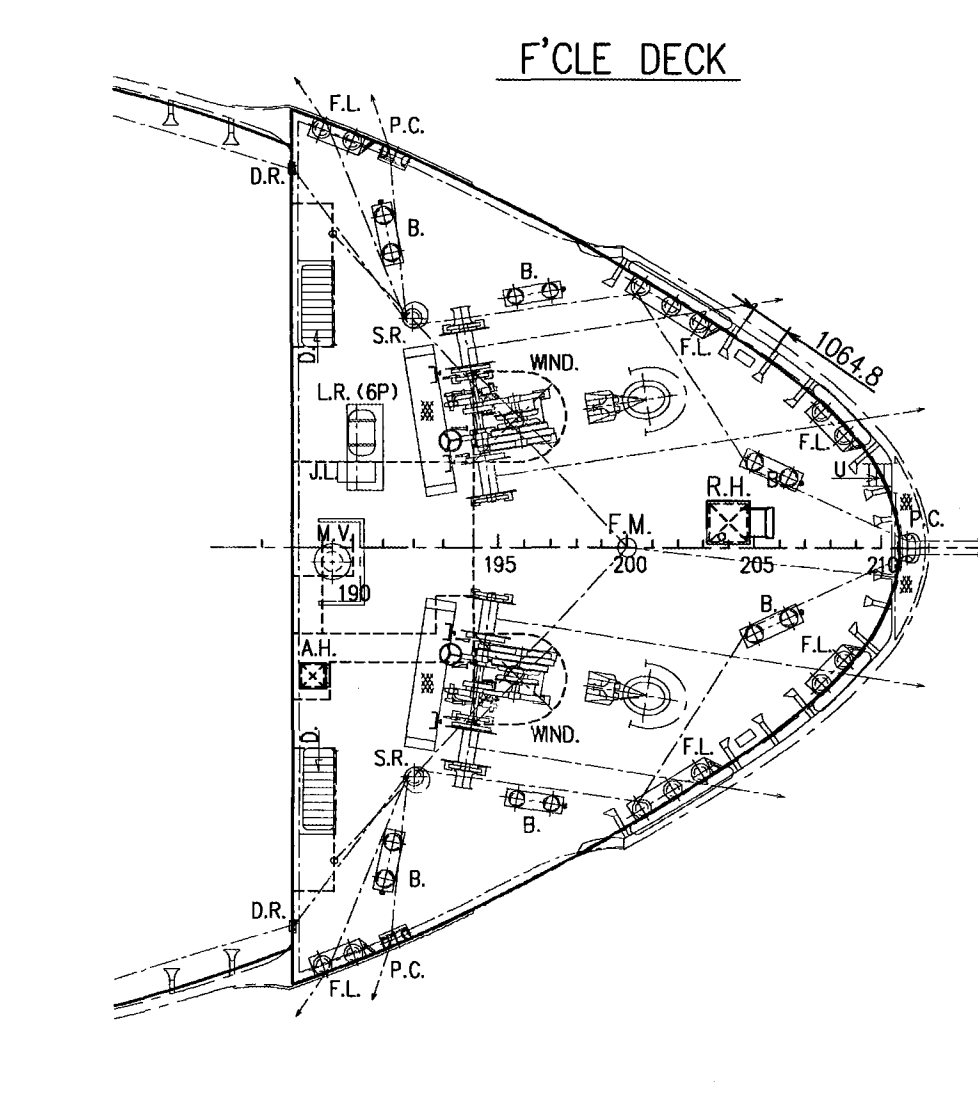


C DECK



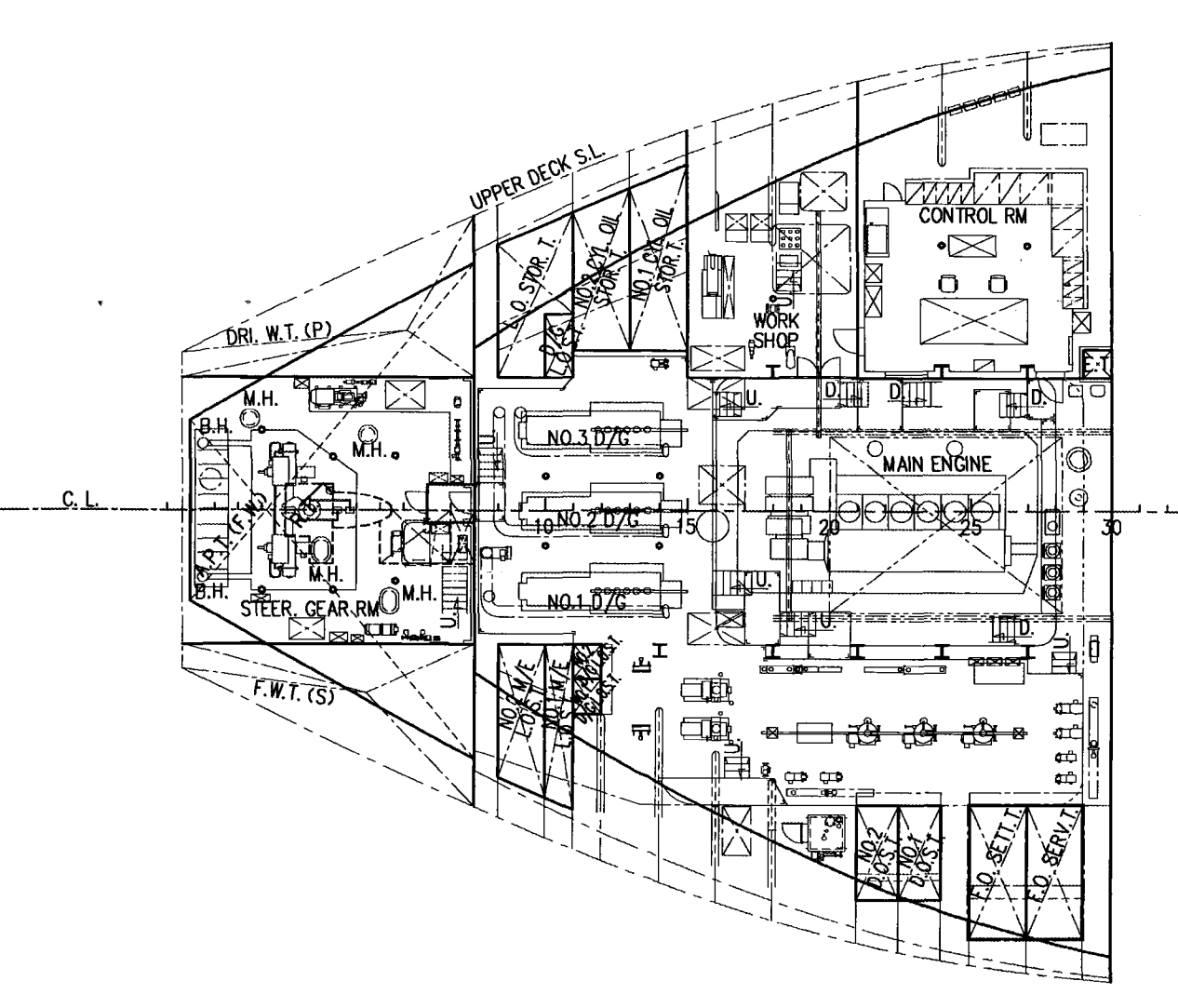
NAV. BRI. DECK

COMP. DECK

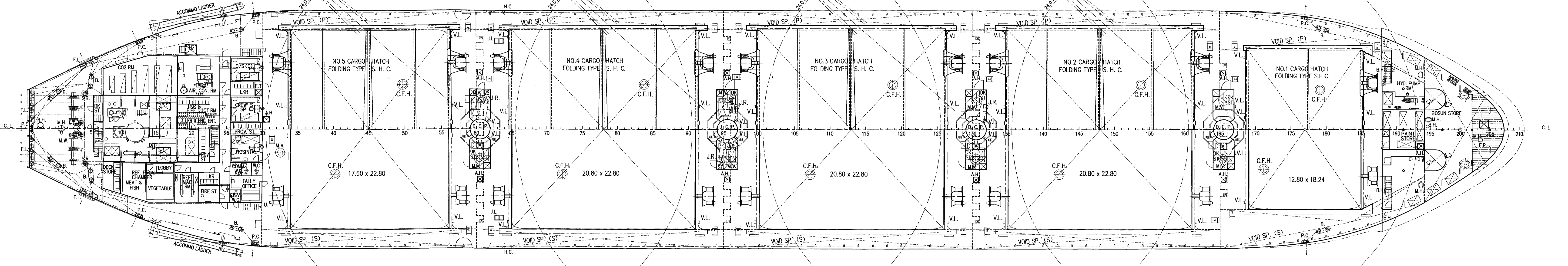
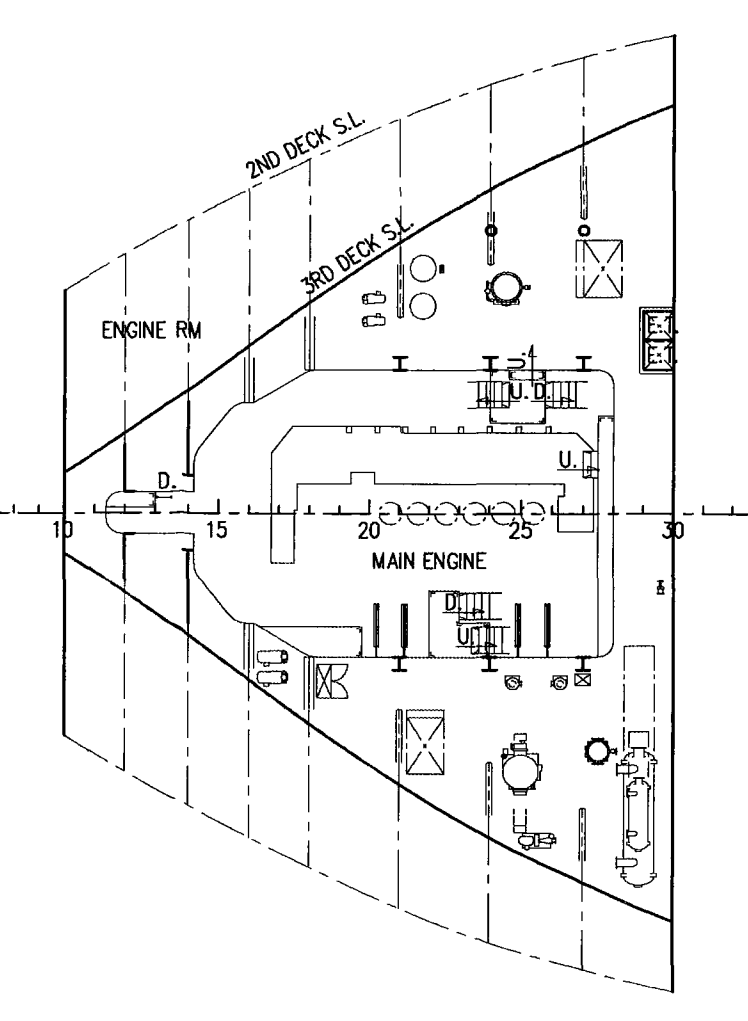


F'CLE DECK

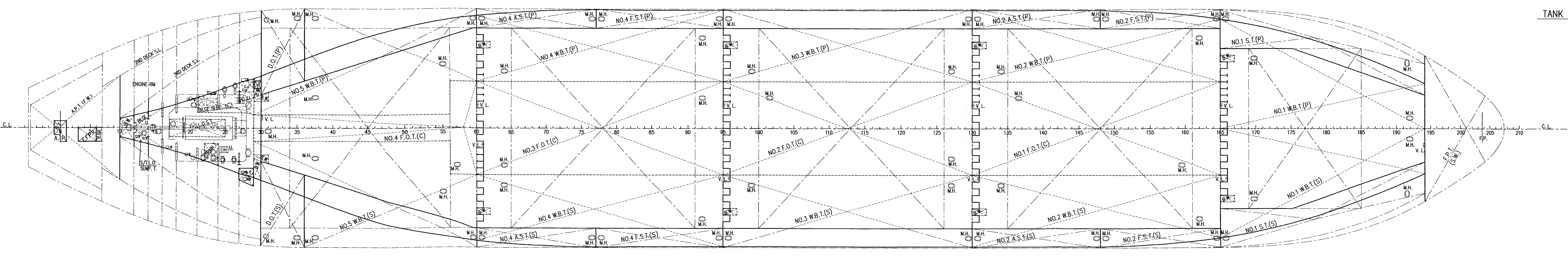
2ND DECK



3RD DECK



UPPER DECK



TANK TOP

PRINCIPAL PARTICULARS	
LENGTH (O.A.)	169.54 m
LENGTH (B.P.)	160.40 m
BREADTH (M.D.)	27.20 m
DEPTH (M.D.)	13.80 m
DRAUGHT (EXT.)	9.164 m
DEADWEIGHT	28,734 MT
GROSS TONNAGE (I.C.T.M. 1989)	18,095
NET TONNAGE (I.C.T.M. 1989)	9,649
MAIN ENGINE :	
MANITÄ-MAN	B & W 6S42MC (MARK 7) x 1 set
MAXIMUM OUTPUT	6,450 kw x 1,350 rpm
NORMAL OUTPUT	5,510 kw x 1,290 rpm
(85% M.C.R.)	
HOLD CAPACITY : (C.GRAIN)	37,181.19 mt
(C.BALE)	35,401.88 mt
SPEED :	
TRIAL MAX.	16.185 knots
SERVICE SPEED on the design loaded draught (9.60m moulded) at N.O.R. with 15% S.N.	14.2 knots
CLASS : NIPPON KAI KYOKAI (NK)	
CLASSIFICATION CHARACTERS : NS+ (SULK CARRIER MODIFIED) and MNS+	
INSTALLATION CHARACTERS : CMC, MPP, LSA, RCF, JPS	
DESCRIPTIVE NOTE : DOUBLE HULL CONSTRUCTION APPLIED TO ALL CARGO HOLDS	
SERVICE AREA :	OCEAN GOING
PORT OF REGISTRY :	MAJURO

COMPLEMENT				
DECK PART	ENGINE PART	BUSINESS PART		
CAPTAIN	1 CHIEF ENGINEER	1		
CHEF OFFICER	1 1ST ENGINEER	1		
2ND OFFICER	1 2ND ENGINEER	1		
3RD OFFICER	1 3RD ENGINEER	1		
BOATSWAN	1 NO.1 OILER	1 CHEF COOK	1	
ABLE SEAMAN	3			
ORD. SEAMAN	3 OILER	3 MISS MAN	1	
TOTAL NUMBER OF CREW CLASS				
TOTAL NUMBER OF CREW CLASS				8 P.
OFFICER'S SPARE (JUNIOR OFFICER CLASS)				2 P.
CREW'S SPARE (RATING CREW CLASS)				1 P.
OFFICER'S SPARE (PILOT)				1 P.
GRAND TOTAL				25 P.

M.V. PAXI
BOX: Basic Part 1/1
CODE: C-0200
A-A-2

CAUTION
THIS DRAWING OR DOCUMENT IS THE PROPERTY OF MABARI SHIPBUILDING CO., LTD.
REPRODUCING, COPYING, UTILIZATION FOR PURPOSES OTHER THAN AGREED, DISCLOSE TO A THIRD PARTY, ARE STRICTLY SUBJECT TO PRIOR WRITTEN AGREEMENT BY MABARI SHIPBUILDING CO., LTD.

MABARI SHIPBUILDING CO., LTD.
DESIGN DIVISION
MAY 11, 2010

FINISHED PLAN			
CONFERRED	MABARI DESIGN GROUP BASIC DESIGN TEAM		
APPROVED	<i>[Signature]</i>		
CHECKED	<i>[Signature]</i>		
DRAWN	<i>[Signature]</i>		
SHIP NO.	S-697	CLASS	NK
SCALE	1/200	DWG. NO.	C-0200
MABARI SHIPBUILDING CO., LTD.		MABARI SHIPBUILDING CO., LTD.	
DATE: APR 30, 2010			

M.V. " PAXI "
IMO 9449792
GENERAL ARRANGEMENT