

DESCRIPTION	FRMIN #	FRMAX #	WNET m <sup>3</sup>	WEIGHT m <sup>3</sup>	L.C.G. m	T.C.G. m	V.C.G. m
Density=1 t/m <sup>3</sup> , Fill=1							
NO.1 CARGO HOLD	193	229	13956.54	13956.54	169.978	-0.000	10.832
NO.2 CARGO HOLD	194	17882.44	138.610	138.610	0.000	0.000	10.522
NO.3 CARGO HOLD	114	152	15350.47	15350.47	106.200	-0.000	10.566
NO.4 CARGO HOLD	76	115	15850.41	15850.41	75.522	0.000	10.522
NO.5 CARGO HOLD	37	77	14944.46	14944.46	44.834	0.000	10.952
SUBTOTAL			77784.31	77784.31	106.970	0.000	10.669
Density=1.025 t/m <sup>3</sup> , Fill=1							
F.P.TK.	229	248	1373.04	1407.37	169.314	-0.000	5.441
NO.1 W.B.TK.P	193	229	1622.85	1663.42	168.708	10.403	7.138
NO.1 W.B.TK.S	193	229	1639.64	1680.63	168.581	-10.325	7.097
NO.2 W.B.TK.P	152	193	1834.25	1880.10	138.590	11.330	7.365
NO.2 W.B.TK.S	152	193	1834.25	1880.10	138.590	-11.320	7.365
NO.3 W.B.TK.P	114	152	1840.37	1886.38	106.200	-11.023	7.041
NO.3 W.B.TK.S	114	152	1840.37	1886.38	106.200	11.023	7.041
NO.4 W.B.TK.P	76	114	1117.32	1145.25	74.218	9.907	5.996
NO.4 W.B.TK.S	76	114	1117.32	1145.25	74.218	-9.907	5.996
NO.5 W.B.TK.P	40	76	1051.30	1077.59	43.744	-9.952	2.724
NO.5 W.B.TK.S	40	76	1051.30	1077.59	43.744	9.952	2.724
A.P.TK.	-6	14	1714.27	1757.13	2.703	0.000	12.832
SUBTOTAL			18036.30	18487.21	109.330	-0.003	6.371
Density=0.98 t/m <sup>3</sup> , Fill=0.98							
NO.1 H.F.O.TK.(L.S.)	76	113	460.72	442.47	74.440	12.565	17.229
NO.1 H.F.O.TK.(S)	76	113	460.72	442.47	74.440	-12.565	17.229
NO.2 H.F.O.TK.P	37	76	480.97	461.93	43.811	12.531	17.239
NO.2 H.F.O.TK.S	37	76	480.97	461.93	43.811	-12.531	17.239
NO.1 H.F.O. SERV. TK.(L.S.)	31	33	19.69	18.91	23.380	-9.502	16.458
NO.1 H.F.O. SERV. TK.(L.S.)	33	35	19.69	18.91	25.020	-9.502	16.458
NO.2 H.F.O. SERV. TK.	29	31	19.69	18.91	21.740	-9.502	16.458
NO.2 H.F.O. SERV. TK.	27	29	19.69	18.91	20.100	-9.502	16.458
SUBTOTAL			1962.13	1884.43	57.342	-0.381	17.203
Density=0.85 t/m <sup>3</sup> , Fill=0.98							
M.D.O.TK.	11	21	114.97	95.77	10.206	-11.910	16.597
LS. M.G.O. SERV. TK.	21	35	137.82	114.80	19.739	-13.111	16.882
M.D.O. SERV. TK.	19	21	15.94	13.28	13.940	-10.700	16.448
LS. M.G.O. SERV. TK.	21	23	16.46	13.71	15.180	-10.730	16.400
SUBTOTAL			285.19	237.56	15.286	-12.354	16.618
Density=0.9 t/m <sup>3</sup> , Fill=0.98							
M/E L.O. SUMP TK.	22	33	24.47	21.59	19.690	0.000	0.957
NO.1 C.V.O. OIL STOR. TK.	16	18	27.27	24.05	11.093	12.571	12.834
NO.2 C.V.O. OIL STOR. TK.(L.T.B.)	14	16	24.43	21.54	9.457	-12.603	12.691
M/E L.O. STOR. TK.	14	16	20.94	18.47	9.440	-7.541	12.150
M/E L.O. SETT. TK.	14	16	31.17	27.49	9.452	-11.530	12.287
G/E L.O. STOR. TK.	14	16	10.54	9.30	9.440	8.330	12.150
G/E L.O. SETT. TK.	14	16	10.40	9.17	9.440	6.741	12.150
SUBTOTAL			149.22	131.61	11.429	1.919	10.520
Density=1 t/m <sup>3</sup> , Fill=1							
D.W.TK.	2	11	156.79	156.79	3.963	10.362	16.859
F.W.TK.	2	7	84.44	84.44	2.721	-10.245	16.868
DISTILLED W.TK.	7	10	53.80	53.80	8.106	-10.472	16.851
SUBTOTAL			295.13	295.13	3.816	0.661	16.860
Density=1 t/m <sup>3</sup> , Fill=1							
COOL. W. TK.	8	14	33.56	33.56	7.325	0.000	3.730
Density=1 t/m <sup>3</sup> , Fill=0.98							
F.W. WASHING TK.	37	114	364.16	356.88	59.708	15.349	16.340
SLOP. SEWAGE TK.	114	364.16	356.88	59.708	-15.349	16.340	
SEWAGE HOLD TK.	25	29	57.83	56.67	19.368	11.545	8.392
BILGE WATER TK.	27	40	60.74	59.53	26.061	3.159	1.161
L.O. DRAIN TK.	25	27	2.30	2.25	18.517	-3.088	1.431
F.O. OVERB. TK.	36	40	28.37	27.80	28.218	-3.274	1.100
F.O. DRAIN TK.	25	27	2.30	2.25	18.517	-3.088	1.431
S/T L.O. SUMP TK.	14	16	6.51	6.38	9.559	-0.119	1.231
SLUDGE TK.	27	36	32.38	31.73	24.171	-3.016	1.215
FO PURIFIER TK.	36	32	8.17	8.01	25.020	-9.141	9.700
LO PURIFIER TK.	30	32	4.11	4.03	22.560	-12.330	9.700
SUBTOTAL			931.03	912.41	51.789	0.582	13.599

NOTE:  
1. T.C.G. (-) STARBOARD SIDE (+) PORT SIDE  
2. ORIGINAL COORDINATE OF L.C.G. IS LOCATED AT FRAME 0 (A.P.)

主要尺度及数据  
PRINCIPAL DIMENSIONS

总长	LENGTH O.A.	199.90 m
垂线间长	LENGTH B.P.	194.50 m
型宽	BREADTH MLD.	32.26 m
型深	DEPTH MLD.	18.50 m
设计吃水	DESIGNED DRAFT	11.30 m
结构吃水	SCANTLING DRAFT	13.30 m
结构吃水重量	DEADWEIGHT AT SCANTLING DRAFT	63,083 t
船级	CLASSIFICATION I.R.-100A1 Bulk Carrier, CSR,BC-A[1]Holds No.2&4 may be empty.	
	GRAB(20)ESP,ShipRight(CM,ACS(B)),LI,MS,ECC(RM,BWT)	
	← LMC,UMS,with the descriptive notes:ShipRight (SERS,SCM),BWP(S,F,T)	
IMO号	IMO NUMBER	9737357

**ASSOCIATED DOCUMENT**

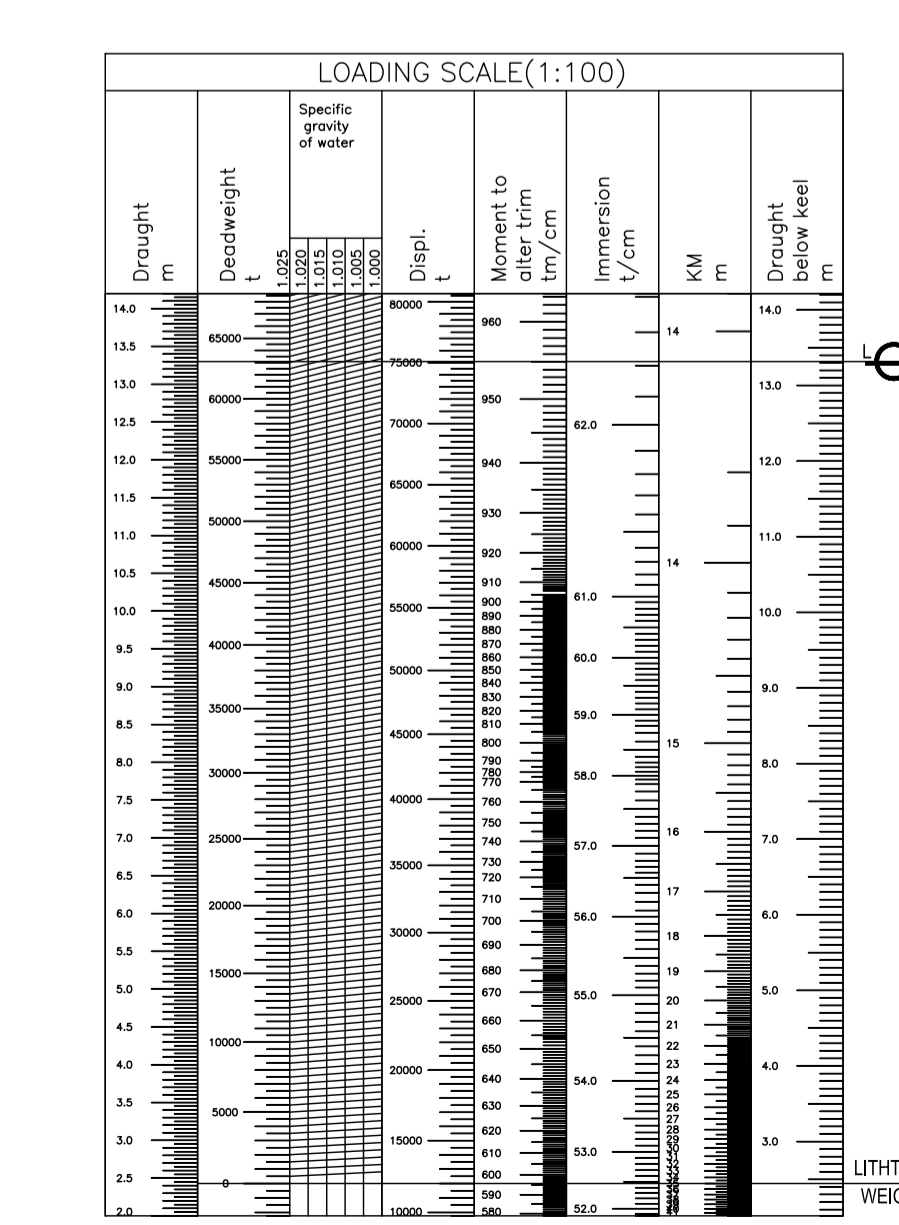
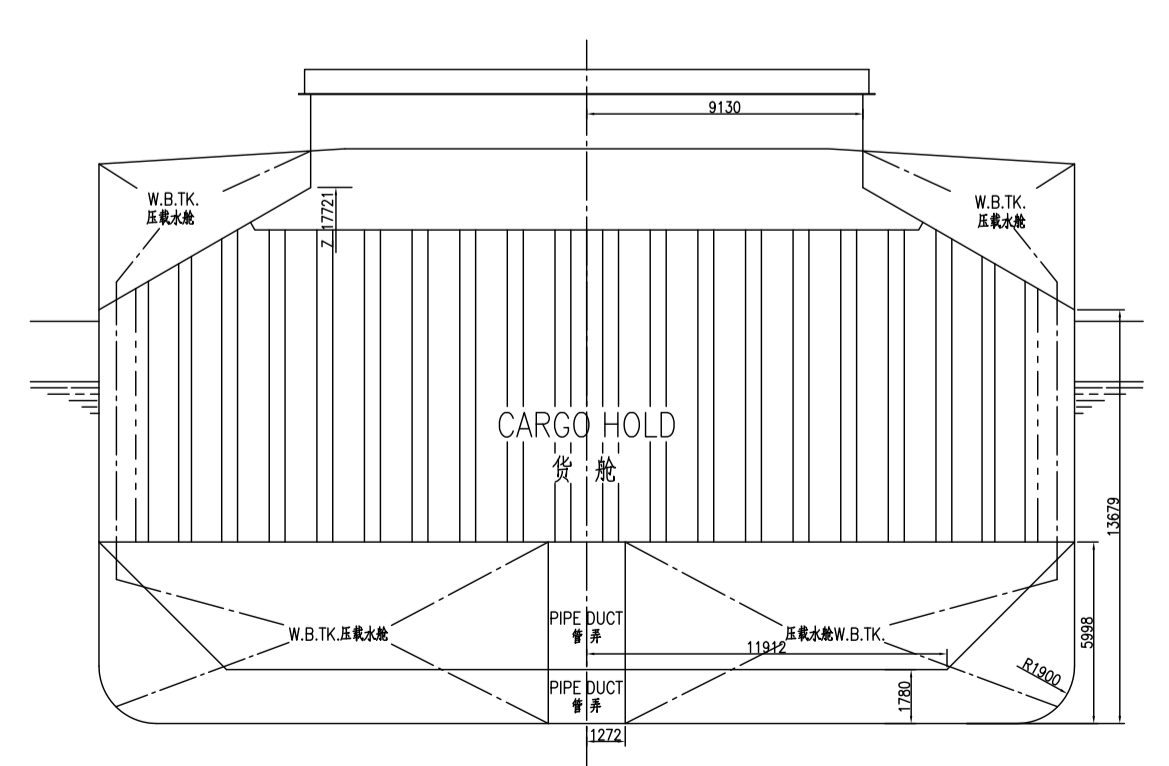
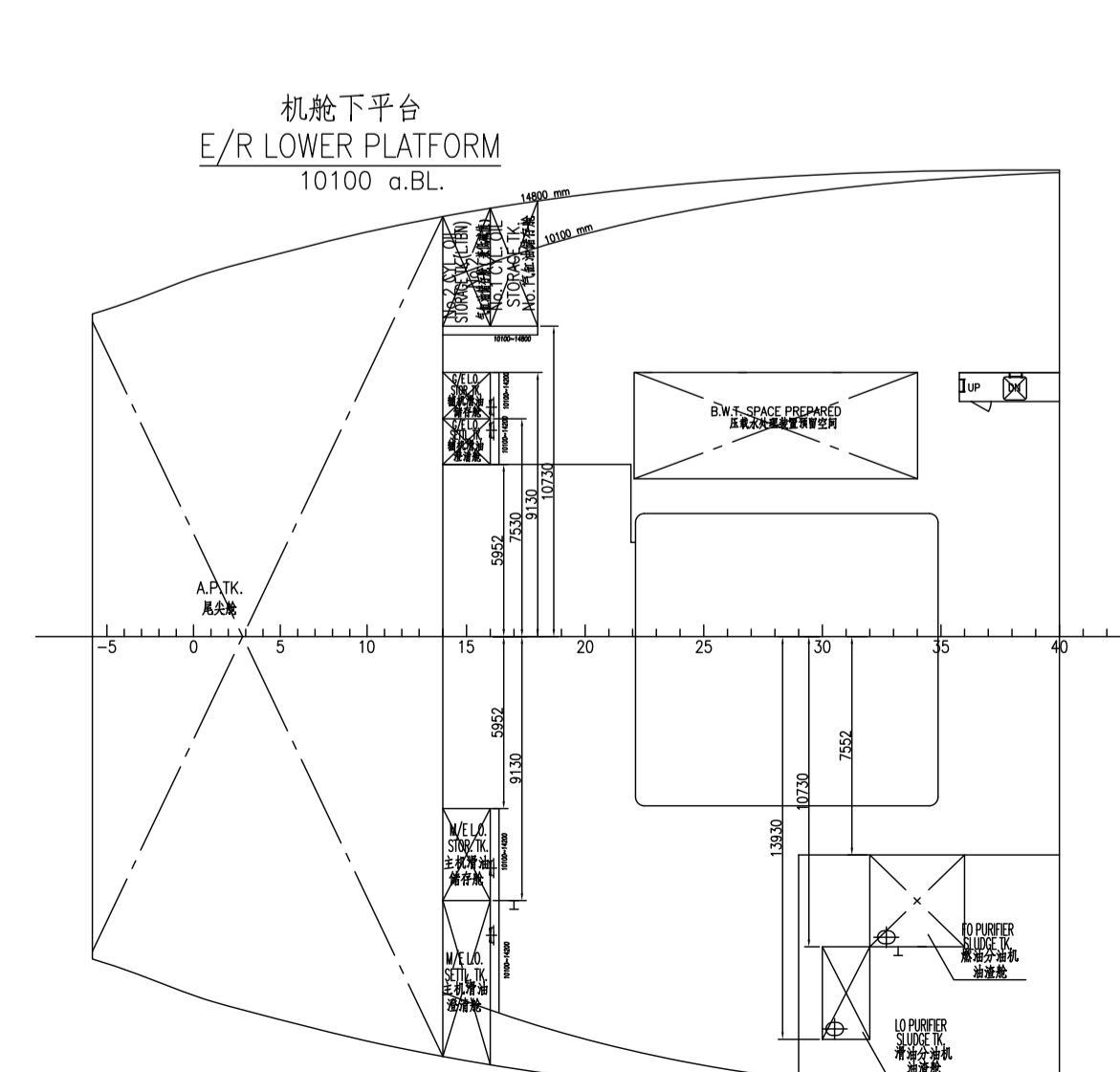
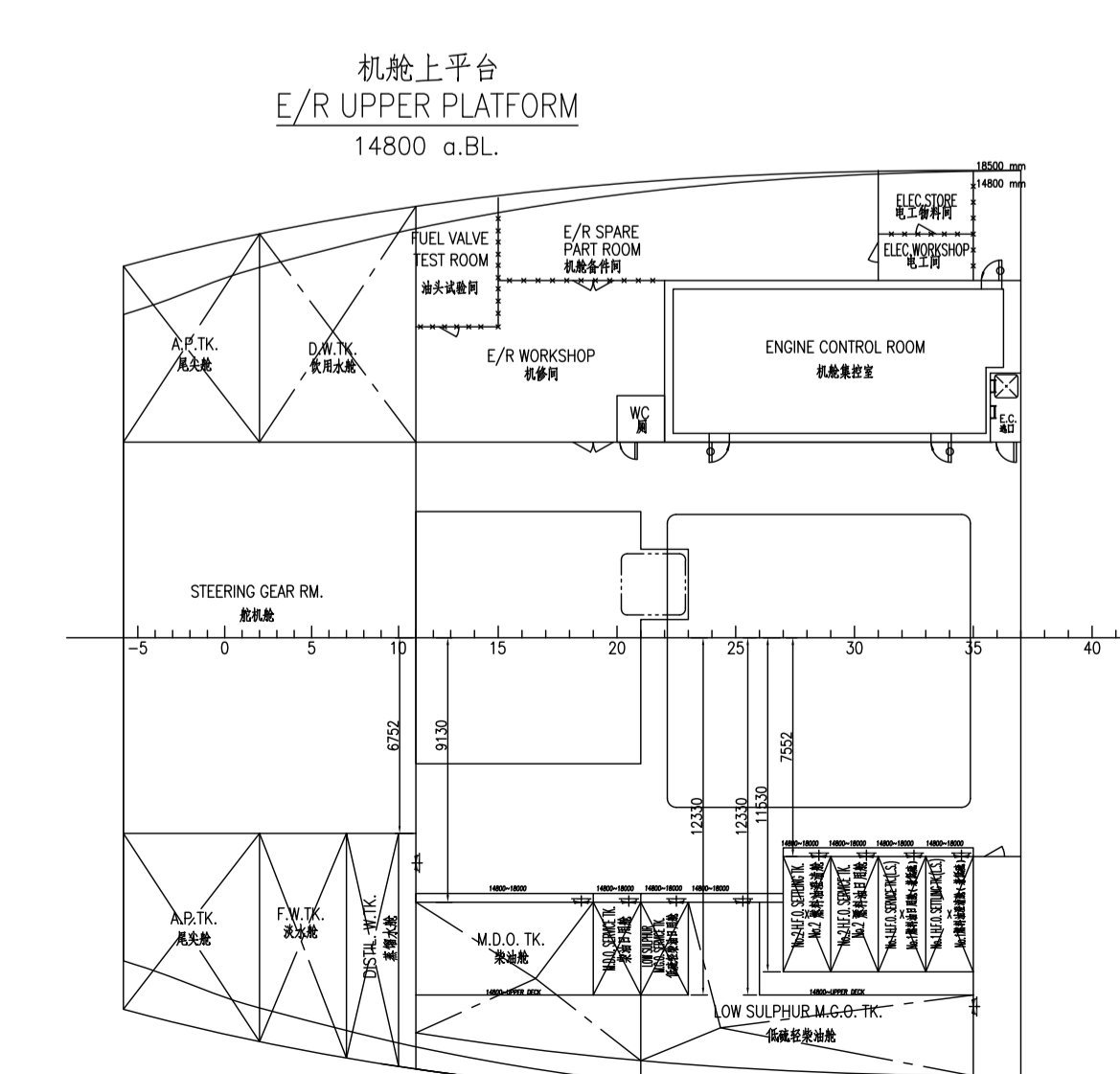
IMO Number: 9737357

This document is to be used in conjunction with the Trim & Stability Information

approved on: 18 August 2015

Date: 18 August 2015 Initials: WXH

Marine, Shanghai Technical Support Office  
Statutory Section  
Lloyd's Register Classification Society China Co Ltd



FINAL DESIGN	完工设计	63,500DWT BULK CARRIER	SC4622(HT)G2-103-02
CURRENT REVISION	当前版本	CAPACITY PLAN	HULL NO.: HT64-124
DESIGNED	设计	SCALE	1:250
CHECKED	校核	PAGE	1/1
VERIFIED	验证	TOT. AREA	1,250 m <sup>2</sup>
APPROVED	批准	DATE	2015.08

This drawing and the information contained is the exclusive property of SMAR and must not be copied or handed over to third parties without our written permission.

本图(文件)及所含信息均属于上海船舶研究设计院(SMAR)所有,未经书面许可,任何人不得复制或转交第三方。