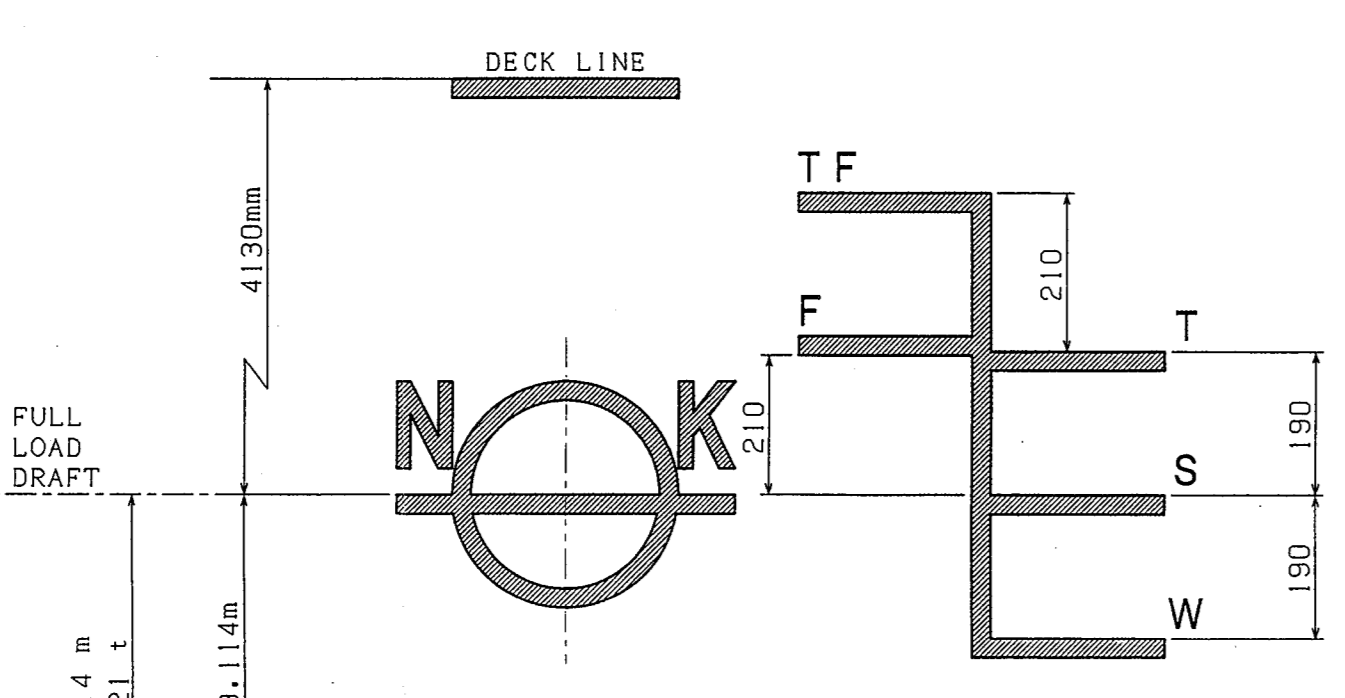


CAPACITY PLAN

SCALE : 1/200

M.T.C. (t-m)	T.P.C. (t)	DISP. (t)	DRAFT (m)	DEADWEIGHT	
				SEA WATER (t)	FRESH WATER (t)
380				25000	25000
360	36.00	30000	9.0	25000	20000
340		25000	8.0	20000	15000
320	35.00	20000	7.0	15000	10000
300		15000	6.0	10000	5000
280	34.00	10000	5.0	5000	0
	33.00	5000	4.0	0	0
			3.0		
			2.0		



FULL LOAD (SUMMER EXT.) DRAFT = 9.114 m
DISPLACEMENT = 30,000 t

FULL LOAD (SUMMER EXT.) DRAFT = 5.114 m
DISPLACEMENT = 30,000 t

LIGHT DRAFT = 1.888 m
WEIGHT = 5,611 t

LIGHT WEIGHT DRAFT = 1.888 m
WEIGHT = 5,611 t

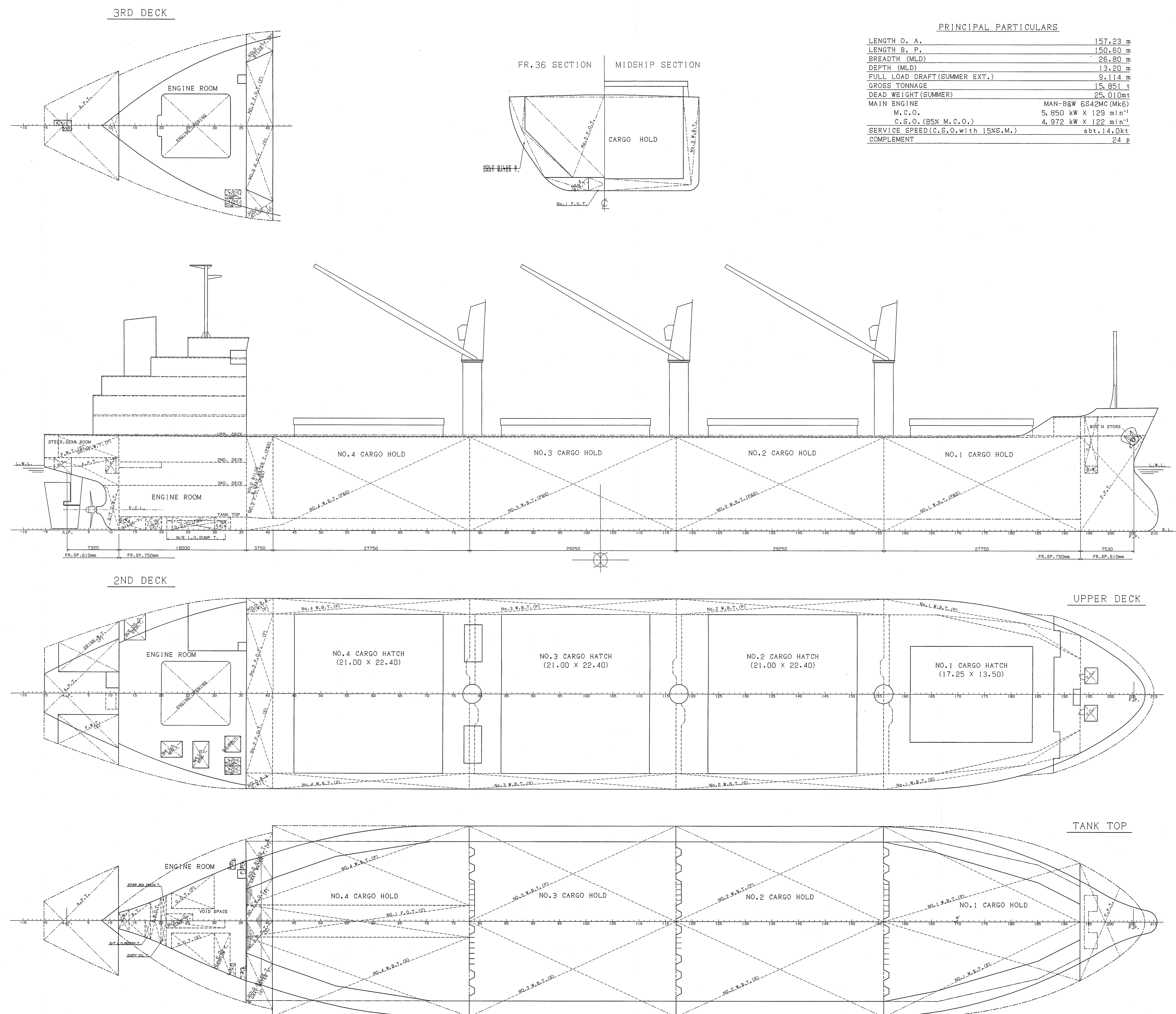
NAME OF TANKS	POSITION (FR.-FR.)	CAPACITY (m³)	WEIGHT (t)	L C G		V C G	
				(m)	(m)	(m)	(m)
F. P. T.	C 193-193	811.53	832	-70.80	7.02		
No.1 W. B. T.	P 156-193	1161.27	1190	-53.14	4.89		
No.2 W. B. T.	S 117-156	1370.40	1405	-25.39	4.36		
No.3 W. B. T.	P 78-117	1371.26	1406	3.86	4.36		
No.4 W. B. T.	S 36-78	1186.33	1195	32.44	4.77		
A. P. T.	C AE-12	173.81	178	71.56	9.02		
TOTAL		11123.74	11402				

NAME OF TANKS	POSITION (FR.-FR.)	CAPACITY (m³)	WEIGHT (t)	L C G		V C G	
				(m)	(m)	(m)	(m)
HOLD BILGE & GRAY WATER T.	P 36-41	102.03	105	48.12	6.83		
M/E L.O.SUMP T.	C 21-32	15.80	14	57.81	0.68		
M/E CYL.O.STOR.T.	P 13-17	21.05	19	65.62	12.00		
F.O.OVERFLOW T.	S 30-33	17.37	17	53.32	1.04		
DIRTY OIL T.	S 20-21	3.67	3	61.60	1.04		
S/T L.O.RESERV T.	S 17-18	2.61	2	63.85	1.05		
STUFF.BOX DRAIN T.	P 20-21	3.67	3	61.60	1.04		
BILGE SEPA.O.T.	C 18-20	12.51	13	62.70	1.04		
BILGE T.	C 12-18	16.96	17	65.32	0.99		
S/T COOLING W.T.	C AE-12	14.40	14	66.71	3.35		

NAME OF TANKS	POSITION (FR.-FR.)	CAPACITY (m³)	95% CAPACITY (t)	L C G		V C G	
				(m)	(m)	(m)	(m)
No.1 F.O.T.	C 36-78	236.96	225.11	221	34.28	0.85	
No.2 F.O.T.	P 36-41	413.65	392.97	385	48.08	8.19	
S U M		1054.26	1011.05	991			
D. O. T.	P 22-30	28.19	26.78	23	57.01	1.08	
S U M		56.38	53.56	46			
TOTAL		1120.54	1064.61	1037			

NAME OF TANKS	POSITION (FR.-FR.)	CAPACITY (m³)	WEIGHT (t)	L C G		V C G	
				(m)	(m)	(m)	(m)
DRINKING W. T.	P -2-12	117.35	117	71.71	11.98		
F. W. T.	S -2-12	117.35	117	71.71	11.98		
TOTAL		234.70	234				

NAME OF HOLD	POSITION (FR.-FR.)	CAPACITY (m³)	GRAIN	BALE	L C G (m)	V C G (m)
NO.2 CARGO HOLD & HATCH COAMING	117-156	8310.26	7801.48	-25.50	6.08	
NO.3 CARGO HOLD & HATCH COAMING	78-117	8312.93	7802.66	3.75	6.08	
NO.4 CARGO HOLD & HATCH COAMING	41-78	7825.81	7587.21	32.23	6.23	
TOTAL		30735.53	29325.32			
NO.1 HATCH COAMING ONLY	151-184	334.76		-52.40	14.18	
NO.2 HATCH COAMING ONLY	123-151	702.61		-25.77	14.15	
NO.3 HATCH COAMING ONLY	84-112	702.61		3.48	14.15	
NO.4 HATCH COAMING ONLY	45-73	702.61		32.73	14.15	
TOTAL		2442.59				



LENGTH O. A.	157.23 m
LENGTH B. P.	150.50 m
BREADTH (M.L.D.)	26.90 m
DEPTH (M.L.D.)	13.20 m
FULL LOAD DRAFT (SUMMER EXT.)	9.114 m
GROSS TONNAGE	15,851 t
DEAD WEIGHT (SUMMER)	25,010 mt
MAIN ENGINE	MAN-B&W 6542MC (Mk6)
M.C.O.	5,850 kW X 129 min ⁻¹
C.S.O. (85% M.C.O.)	4,972 kW X 122 min ⁻¹
SERVICE SPEED (C.S.O. with 15% M.)	abt. 14.0 kt
COMPLEMENT	24 p

BIBLIOGRAPHY

12th March 2012
Prepared for finished plan.

MANAGER: *[Signature]*
 ASS. MANAGER: *[Signature]*
 CHIEF: *[Signature]*
 ASS. CHIEF: *[Signature]*
 CHECKED: *[Signature]*
 DRAWN: *[Signature]*
 DATE: 12th March 2012

SHIP NO. 1071
DRAWING NO. B-180
CLASS N K

D.W.24, 000M.T. TYPE
BULK CARRIER
CAPACITY PLAN WITH DEADWEIGHT SCALE
[FINISHED PLAN]

SCALE 1:200

YAMANISHI CORPORATION